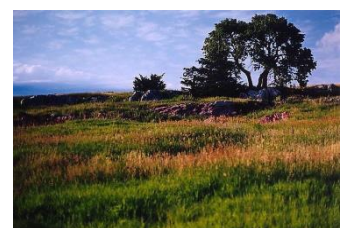


A Guide For Residents



2023 - 2024

TABLE OF CONTENTS

Contents

THE CITY OF LUVERNE WELCOMES YOU.....	5
HISTORY OF LUVERNE.....	6
FEDERAL & LOCAL GOVERNMENT.....	7
FEDERAL, STATE, & LOCAL OFFICIALS	7
VOTING & ELECTIONS	10
ELECTION CALENDAR.....	10
VOTER REGISTRATION	10
VOTER PRECINCTS	10
ELECTION JUDGES.....	11
POLITICAL PARTIES	12
CITY STAFF.....	12
ROCK COUNTY COURTHOUSE	13
CHAMBER OF COMMERCE	13
COMMUNITY SAFETY.....	14
ROCK COUNTY LAW ENFORCEMENT	14
FIRE DEPARTMENT	14
HEALTH & WELLNESS.....	15
SANFORD LUVERNE MEDICAL CENTER	15
PHARMACIES.....	16
DENTISTS	16
CHIROPRACTORS	16
OPTOMETRISTS.....	16
SANFORD LUVERNE HOSPICE SERVICES	17
SOUTHWESTERN MENTAL HEALTH CENTER	17
LUVERNE COUNSELING	18
HEALING PATH COUNSELING & WELLNESS	18
PARKS & RECREATION	19
LUVERNE AQUATICS & FITNESS.....	19
POWER FITNESS	20
CITY PARKS.....	20
SCHONEMAN COUNTY PARK	21
THE LAKE	21
BLUE MOUNDS STATE PARK	21
BLUE MOUND TRAIL	22
ASHBY TRAIL	22
LUVERNE LOOP.....	22
DISC GOLF COURSE.....	23
LUVERNE E-BIKES.....	23
ROLL ON LUVERNE	24

ELECTRIC VEHICLE STATION.....	24
ASSISTED LIVING - NURSING HOME FACILITIES - SPECIAL HOUSING.....	25
GOOD SAMARITAN SOCIETY - LUVERNE.....	25
CONGREGATE CARE - THE OAKS.....	25
ASSISTED LIVING - POPLAR CREEK ESTATES	25
MINNESOTA VETERANS HOME	26
OASIS CARE HOME	26
DEVELOPMENTAL DISABILITY FACILITIES	26
SPECIAL SERVICES.....	27
SOUTHWEST HEALTH & HUMAN SERVICES	27
SOUTHWEST CRISIS CENTER	28
ROCK COUNTY OPPORTUNITIES.....	28
REGULATIONS.....	29
ANIMAL CONTROL	29
BUILDING REGULATIONS / ZONING LAWS	29
WATER RESTRICTIONS	29
BIKES / ROLLERBLADES / SKATEBOARDS	30
DRIVER'S LICENSE / MOTOR VEHICLES.....	30
CURFEW	30
PUBLIC SERVICES	31
PUBLIC RESTROOMS.....	31
UNITED STATES POST OFFICE	31
TELEPHONE SERVICES	32
WIRELESS / INTERNET PROVIDERS	32
CABLE PROVIDERS	32
NATURAL GAS	32
MUNICIPAL UTILITIES.....	33
ELECTRIC.....	33
WATER	33
SEWER.....	33
REBATE PROGRAMS	34
CREDIT POLICY FOR RESIDENTIAL CUSTOMERS	34
PUBLIC WORKS.....	35
ROCK COUNTY TRANSFER STATION	35
HOUSEHOLD HAZARDOUS WASTE FACILITY	35
RECYCLING	36
REFUSE	37
FALL LEAF PICKUP	39
SPRING CLEAN UP	39
SNOW REMOVAL.....	39
TREE BRANCHES & COMPOST.....	40
MOSQUITO SPRAYING	40
EDUCATION	41
SCHOOL SYSTEM	41
ELEMENTARY SCHOOL	42
MIDDLE SCHOOL.....	42
HIGH SCHOOL	42

ALTERNATIVE LEARNING CENTER	43
COMMUNITY EDUCATION PRESCHOOL	43
LITTLE LAMBS PRESCHOOL	44
COMMUNITY EDUCATION	44
MINNESOTA WEST	45
TRANSPORTATION	46
AIRPORT	46
BUS SERVICES	46
ELLIS & EASTERN RAILWAY	46
COMMUNITY TRANSIT ROCK COUNTY	47
LUVERNE TROLLEY	47
CULTURE OF LUVERNE	48
ROCK COUNTY VETERANS MEMORIAL BUILDING	48
PALACE THEATRE	48
CARNEGIE / LUVERNE STREET MUSIC	49
VERNE DRIVE-IN THEATER	50
HISTORY CENTER	50
HISTORIC PRESERVATION	51
HINKLY HOUSE	52
DOLLARS FOR SCHOLARS	52
LUVERNE AREA COMMUNITY FOUNDATION	53
ROCK COUNTY COMMUNITY LIBRARY	53
LEISURE ACTIVITIES	54
BLUE MOUND ICE ARENA	54
LUVERNE COUNTRY CLUB	54
ROCK COUNTY SPORTSMEN'S CLUB	54
TAKE 16 BREWING COMPANY	55
CELEBRATIONS & EVENTS	56
SPRING CITY WIDE RUMMAGE SALES	56
BUFFALO DAYS	56
FARMER'S MARKET	56
HOT DOG NITE	57
ROCK COUNTY FAIR	57
TRI-STATE BAND FESTIVAL	57
WINTERFEST	58
WINTER CARNIVAL	58
GREEN EARTH PLAYERS (GEP)	58
CHURCHES	59
CEMETERIES	62
MEDIA	62
NEWS	62
RADIO	62
CITY OF LUVERNE MOBILE APP	63
CITY OF LUVERNE INTEREST MAP	64
PARKS & TRAILS MAP	65

2023 / 2024 UPCOMING EVENTS 66

THE CITY OF LUVERNE WELCOMES YOU

Luverne is a city located in Rock County, Minnesota. According to the 2020 census, the population of Luverne is 4,946. The city's motto is "Love the Life" which reflects the community's appreciation for the quality of life that Luverne offers.

Luverne is a small town with a big heart. The city has a strong sense of community and is known for its friendly residents and welcoming atmosphere. The area offers a variety of recreational activities for residents to enjoy such as hiking, biking, fishing, and camping. The city also has several parks and playgrounds for children to play.

Luverne is home to several local businesses that offer unique shopping experiences. The city has a variety of restaurants that serve delicious food and drinks. The city also has a thriving arts community with several galleries and theaters that showcase local talent.

Overall, Luverne is a great place to live for those who enjoy small-town living with access to big-city amenities. The city's motto "Love the Life" truly reflects the community's appreciation for the quality of life that Luverne offers.

Welcome to Luverne— you'll "Love the Life!"



Visit the City of Luverne online at:

www.cityofluverne.org

Like us on Facebook – www.facebook.com/CityofLuverne



HISTORY OF LUVERNE

In 1867, the first mail route was mapped from Blue Earth, Minnesota, to Yankton, South Dakota. Philo Hawes, the man who first mapped Luverne, stopped at his regular camping grounds on the Blue Mounds. He discovered that better land lay more to the south. He then traveled to the present site of the Public Works Department in Luverne and built a stable large enough to hold six horses. This stable, which was created from poles and clay, was the very beginning of present-day Luverne. Mr. and Mrs. Hawes named the city after their daughter, Luverne.



Downtown Luverne, Early 1900s



Parade on Main Street

In 1871, the very first school was founded in Luverne. The first high school was established in July of 1883, and in 1888, two students finished the four-year study course, becoming the first graduating class of Luverne High School.

On October 2, 1876, the first passenger train arrived in the village of Luverne. Today, the City of Luverne has a population of 4,946 people (2020 census) and is the county seat of Rock County. There are nine towns in Rock County: Hardwick, Kenneth, Magnolia, Beaver Creek, Hills, Steen, Ash Creek, Kanaranzi, and part of Jasper, which also lies in Pipestone County. Rock County has a population of 9,620 people (2020 Census).



Downtown Luverne, 2023

FEDERAL & LOCAL GOVERNMENT

The City of Luverne operates under a Council-Administrator form of government that is specified in the City Charter. The powers of the Council are policy setting and legislative in nature, along with appointing a City Administrator. The Mayor and Council Members are elected for four-year terms. Day to day management oversight is the responsibility of the City Administrator. The functional divisions consist of Administration, Finance, Public Works, and Public Utilities. Department Heads manage their respective areas of



responsibility and work closely with the Administrator.

The City Council meets in regular sessions on the second and fourth Tuesday of every month at 5:00 p.m. The meetings are held in the city offices complex located at 305 East Luverne Street. There is also a Committee of the Whole meeting on the third Tuesday of every month, also at 5:00 p.m.

In 2007, city offices changed location from Main Street Luverne to 305 East Luverne St., to what was the old hospital. It was remodeled and provides much additional space. City Offices occupy the eastern wing of the building, and the western wing is occupied by Minnesota West Community and Technical College and Sanford Hospice Offices.

City Offices

*305 E Luverne St.
PO Box 659*

(507) 449-2388

Fax (507) 449-5034

FEDERAL, STATE, & LOCAL OFFICIALS

Federal Officials



Tina Smith
U.S. Senate
720 Hart Senate Office Building
Washington, DC 20510
(202) 224-5641
www.smith.senate.gov/



Amy Klobuchar
U.S. Senate
425 Dirksen Senate Building
Washington, DC 20510
(202) 224-3244
www.klobuchar.senate.gov/public/



Brad Finstad
US House District 1 Rep.
2746 Superior Dr. NW, Suite 100
Rochester, MN 55901
(507) 557-6140
<https://finstad.house.gov/>

State Officials



Tim Walz
Governor of Minnesota
130 State Capitol
75 Rev Dr. Martin Luther King Jr.
Blvd.
St. Paul, MN 55155
(651) 201-3400
www.mn.gov/governor/



Joe Schomacker
MN District 22A
Representative
209 State Office Building
St. Paul, MN 55155
(651) 296-5505
www.joeforhouse.com



Bill Weber
MN District 22 Senate
95 University Avenue W
Minnesota Senate Bldg, Room 2109
St. Paul, MN 55155
(651) 296-5650
www.weberforsenate.com

Rock County Board of Commissioners

District 1
Gary Overgaard
(507) 920-7198
gary.overgaard@co.rock.mn.us

District 2
Stan Williamson
(507) 597-6268
stan.williamson@co.rock.mn.us

District 3
Greg Burger
(507) 920-9779
greg.burger@co.rock.mn.us

District 4
Sherri Thompson
(507) 227-6830
sherri.thompson@co.rock.mn.us

District 5
Jody Reisch
(605) 400-7751
jody.reisch@co.rock.mn.us

City Elected Officials



Pat Baustian – Mayor
(Term 2021-2024)
 Phone: (507) 920-7406
 Email: pbaustian@cityofluverne.org



Caroline Thorson - Council Member, North Ward
(Term: 2023-2026)
 Phone: (507) 449-8195 or Cellphone: (507) 220-4424
 Email: cthorsen@cityofluverne.org



Dan Nath - Council Member, North Ward
(Term: 2021-2024)
 Phone: (507) 920-5509
 Email: dnath@cityofluverne.org



Kevin P. Aaker - Council Member, South Ward
(Term: 2023-2026)
 Phone: (507) 283-8711
 Email: kaaker@cityofluverne.org



Scott Viessman - Council Member, South Ward
(Term: 2021-2024)
 Phone: (605) 929-7099
 Email: sviessman@cityofluverne.org

VOTING & ELECTIONS

City of Luverne primary and general elections are held in conjunction with the State of Minnesota's primary and general election in each even-numbered year.

ELECTION CALENDAR

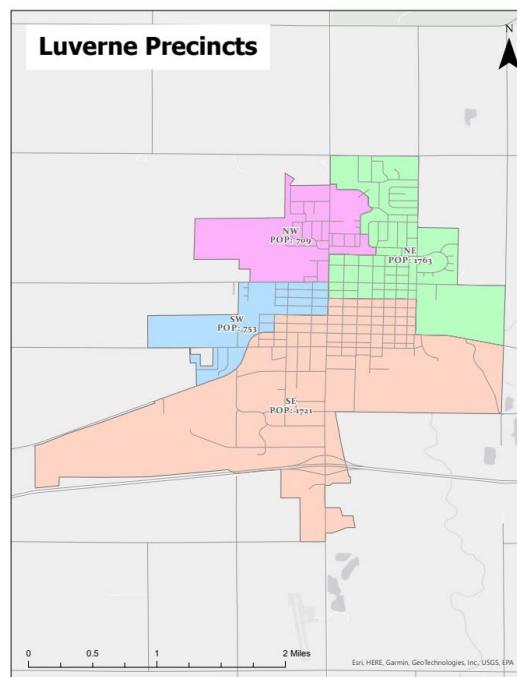
- Precinct Caucuses – Minnesota Secretary of State's Website:
www.sos.state.mn.us/election-administration-campaigns/elections-calendar/
- Primary Election – the second Tuesday in August of each even-numbered year
- General Election – the first Tuesday in November of each even-numbered year

VOTER REGISTRATION

The Minnesota Secretary of State's website now allows you to verify if you are currently registered to vote at your present address. To check your voter registration status, go to <https://mnvotes.sos.state.mn.us/VoterStatus.aspx>.

VOTER PRECINCTS

To view a larger *Luverne Voting Precinct Map* and view the *Poll Finder*, go to www.cityofluverne.org/elections.



ELECTION JUDGES

Judges ensure that the voting process goes smoothly and honestly. Serving as an election judge is a great way to meet your neighbors and protect one of our most cherished freedoms – the right to vote.

What are election judges?

Election judges are responsible for the administration of election procedures in the voting place on Election Day. Election judges help guarantee that the rights of voters are protected on Election Day. Become a member of this proud team, working to guarantee the election process is fair and in accordance with our laws.

Who is eligible?

To be an election judge you must:

- Be eligible to vote in the State of Minnesota
- Be able to read, write, and speak English
- Be appointed by the City Council
- Attend a required training session
- Declare your party affiliation (state law requires this to make sure that no more than half of election judges at a polling place are from any one party)

The following are not eligible:

- A spouse, parent, child, or sibling of another election judge at the same polling place
- A candidate in the election

How much time does it take?

You may be assigned to the primary, general, or both elections. The majority of shifts are for the full day. (6:30 a.m. until the closing of the polls and end of day tabulation) Some half day shifts are also available.

Will I be paid? Can I take time off work?

State law allows for time off from work without loss of wages to serve as an election judge with 20 days prior written notice to the employer. Luverne's election judges are paid \$11.50 per hour for training and working the election.

How do I become an election judge?

Complete the application form found at:

www.sos.state.mn.us/media/3110/election-judge-interest-form.pdf and email it to the City Clerk, **Jessica Mead** at jmead@cityofluverne.org.

If you have questions, please contact City Clerk, Jessica Mead at jmead@cityofluverne.org, or at (507) 449-9898.

POLITICAL PARTIES

If you are interested in getting involved with the following political parties or want any information, please feel free to contact the following local party leaders.

(Republican)
Jane Lanphere
206 Cashin Dr.
Luverne, MN 56156
Office: (507) 283-4061
Home: (507) 920-5197

(Democratic-Farmer-Labor)
Dale Moerke
500 W Hatting St.
Luverne, MN 56156
Home: (507) 283-2016

CITY STAFF

City of Luverne
305 E Luverne St.
P.O. Box 659
Luverne, MN 56156
(507) 449-2388

For Utility Billing Questions and Moving In /
Moving Out Information, contact:
Peggy Adams
(507) 449-2388
padams@cityofluverne.org

City Administrator – Jill Wolf
Phone: (507) 449-9918
Email: jwolf@cityofluverne.org

Public Works Supervisor
John Stoffel
Phone: (507) 449-5043
Email: jstoffel@cityofluverne.org

Finance Director
Robyn Wessels
Phone: (507) 449-9908
Email: rwessels@cityofluverne.org

Water / Wastewater Supervisor
Darrel Ykema
Phone: (507) 920-5988
Email: dykema@cityofluverne.org

Economic Development Director
Holly Sammons
Phone: (507) 449-5033
Email: hsammons@cityofluverne.org

Building / Zoning Official
Chad McClure
Phone: (507) 449-5031
Email: cmclure@cityofluverne.org

City Clerk
Jessica Mead
Phone: (507) 449-9898
Email: jmead@cityofluverne.org

Electric Supervisor
Brian Remme
Phone: (507) 449-5046
Email: bremme@cityofluverne.org

City Attorney
Ben Vander Kooi
Phone: (507) 283-9546
Address: 127 E Main St.
Email: lawkooi@gmail.com

ROCK COUNTY COURTHOUSE

The Rock County Courthouse was built in 1888 and underwent a renovation in October of 1987. The courthouse follows the Richardsonian Romanesque style, popular in late 19th-century America, for churches, railway stations, and other public buildings. This style is characterized by deep entrance arches, groupings of windows, and various types and textures of masonry. Constructed of local materials, such as red sioux quartzite from the Hinkly Quarry and buff kasota stone, the courthouse features a corner tower that serves as the building's main entrance, a gazebo-like observation deck, and cannon out front. The cannon dates back to 1896, where it was a siege gun at Boston Harbor and was later donated by the Grand Army of the Republic. A pioneer memorial can also be found to the west of the courthouse, which remembers "those who blazed the trail for those who followed."



204 E Brown St.
Mon. – Fri. 8:00 a.m. – 5:00 p.m.
Closed Holidays

The ground floor of the Courthouse holds the Veteran's Service Center and the County Administrator's office. The main floor houses the Auditor-Treasurer Offices as well as the Deputy Registrar and Land Records office. The Court System and Judge's Chambers are found on the second floor and the final or third floor is occupied by the law library.

In 2007, a memorial honoring the Rock County Veterans was added. It is located on the front lawn of the Rock County Courthouse. The structure of the memorial consists of a life-sized veteran in uniform made of bronze who sits on a granite bench. There are five benches, each facing a point of a 24-foot star. The center has a five-sided obelisk with the names of the veterans who died while serving their country. The memorial is a gift from Warren Herreid II and his wife, Jeannine Rivet.

For more information, go to www.co.rock.mn.us, or visit their Facebook page.

CHAMBER OF COMMERCE

"To welcome, inform, promote, and educate residents, visitors, and others of the business opportunities in the Luverne area and help promote growth in the business community"

The Luverne Area Chamber of Commerce is a membership organization that supports the business community in Luverne. The Chamber is responsible for many of the events in the community and works closely with government bodies and the business community to make Luverne a better place to live, work, and play.



The Chamber is located at the Veterans Memorial Building, 213 East Luverne St. Luverne, MN 56156.
To contact them, call (507) 283-4061 or go to their website <http://luvernechamber.com>

COMMUNITY SAFETY

ROCK COUNTY LAW ENFORCEMENT

In 2006-2007, Rock County built a new Law Enforcement Center. The 911 emergency systems have been in operation in Rock County since 1986, but were later enhanced in June of 1989. In 2005, new maps were made. This new system has been extremely effective in supporting response time to emergency calls. In an emergency, dialing “911” will automatically route your call to the Police and Fire Dispatch Center that serves the area from which you are calling. The telephone number and address of the location from which you are calling is automatically displayed on a screen in the Dispatch Center, which helps the dispatcher provide a quicker response to your call.



The 911 emergency systems can include more than the actual rescue. It is possible to create a file on yourself and/or your family for use during an emergency. Included in this file are: number of occupants in the home, number and location of bedrooms, who to contact in case of an emergency, and existing medical problems. The file may include anything that you think may be helpful in a time of an emergency. It is strongly suggested that new residents make a file for themselves or their families. **The 911 emergency systems are for emergency use only!** In non-life-threatening situations, please contact the Law Enforcement Department at (507) 283-5000.

For more information, go to the Rock County Sheriff's Office Facebook page.

Public Safety Alerts - Nixle

Get trusted alerts from the Rock County Sheriff's Office or City of Luverne by texting “56156” to 888777. You will then be signed up to receive a text from the RCSO when an alert is sent out. You can also go to www.nixle.com to sign up for email alerts as well. If you have questions, contact Sheriff Evan Verbrugge at (507) 283-5000.

FIRE DEPARTMENT

The Luverne Fire Department is a volunteer organization consisting of 33 volunteers. The equipment system consists of one ladder truck, two tanker trucks, one rescue squad, two city engines, one rural engine, and one grass rig. The fire department also has a trailer, quick response vehicle, air supply truck, side by side, 12-foot aluminum boat, and 14-foot inflatable boat.



Fire Chief - David Van Batavia
1st Assistant Chief - Austin Kurtz
2nd Assistant Chief - Jordan Siebenahler

*The Fire Department is located at 213 E Lincoln St. The non-emergency telephone number is (507) 449-5039. **In case of fire, call 911.***

HEALTH & WELLNESS

SANFORD LUVERNE MEDICAL CENTER

“Dedicated to the work of healing”

Sanford Luverne Medical Center, located at 1600 N Kniss Ave, is a 25-bed hospital that provides inpatient medical, surgical, critical, obstetrical, swing bed, and hospice care. The facility, built in July of 2005, was designed for patient convenience, comfort, and privacy. Several spacious areas accommodate a growing number of outpatients for same day surgery, rehab services (physical, occupational, speech, and massage therapy), chemotherapy, cardiac rehab, radiology services (x-rays, mammograms, ultrasounds, CT scans, MRIs, nuclear imaging, and bone scans), laboratory, respiratory care, hospice, and outpatient chemical dependency services.

Sanford Luverne Clinic is a primary care clinic with locations in Luverne, Adrian and Edgerton. Sanford Luverne’s Family Medicine clinics provide care for the whole family. From annual physicals, regular check-ups, baby wellness, vaccinations, and school & athletic physicals, our family medicine providers serve families and communities throughout the region with the latest in care. As part of the Sanford Health system, Sanford Luverne Clinic also provides on-site access to pediatric and adult outreach specialists.



Sanford Luverne Medical Center

1600 N Kniss Ave.

Hospital - (507) 283-2321

Clinic – (507) 283-4476

www.sanfordluverne.org

Specialties

Cardiac
Cardiology
Electrophysiology
Emergency Medicine
Family Medicine
General Surgery
Hematology
Hospice
Internal Medicine

Medical Oncology
Nuclear Medicine
Psychiatry
Pulmonology
Radiology
Urology
Vascular Surgery
Walk-In

Services

Chemical Dependency
Colorectal Screenings
Gynecologic Surgery

Home Care
Mammography
Obstetrics

For more information, go to www.sanfordluverne.org.

PHARMACIES

Lewis Drug
Mike Carbonneau
202 S Kniss Ave.
(507) 283-9549
www.lewisdrug.com/stores/lewis-family-drug-luverne-mn

DENTISTS

Luverne currently has one practicing dental office, Luverne Family Dental. Horner Barrow Orthodontics visits Luverne Family Dental every three weeks on Fridays. Dr. Horner / Dr. Barrow's main office is in Sioux Falls, SD.

Call Horner Barrow Ortho at (605) 335-6680 or visit www.hornerbarrowortho.com.

Luverne Family Dental
Dr. Tanner Brolsma
115 E Main St.
(507) 283 – 9129
www.luvernefamilydental.com

CHIROPRACTORS

Luverne Health & Wellness
Dr. Codie Zeutenhorst
109 S Freeman Ave.
(507) 449-4400
www.luvernechiro.com

Rock County Chiropractic
Dr. Michael Smith
103 E Main St.
(507) 283-2561
www.rockcountychiropractic.com

OPTOMETRISTS

Rock County Eye Clinic
Dr. Sandra Carman
104 N Freeman Ave.
(507) 283-2345
www.rockcountyeyeclinic.com

SANFORD LUVERNE HOSPICE SERVICES

Hospice of Sanford Luverne Medical Center provides quality, compassionate end-of-life care for terminally ill people. Hospice care focuses on quality of life, comfort, and dignity for patients and their families. Hospice includes physician services, provided by the patient's own physician, and nursing visits, provided as often as needed to monitor and support the patient's medical care, pain control, and symptom management. A nurse is on-call 24-hours a day, seven days a week. Necessary social workers and spiritual care services are also provided by the Sanford Luverne Hospice.



The Cottage is located at 217 N Oakley St. It features four private patient bedrooms with a half bath, 24-hour hospice care by certified staff, whirlpool bath and personal care service, home cooked meals and laundry service, front porch with wicker furniture, a backyard flower garden with benches, and a memorial pathway.

The Sanford Luverne Hospice Offices are located at 304 N McKenzie St. in Luverne.

For more information, call (507) 283-9356 or visit www.sanfordhealth.org/locations/the-cottage.

SOUTHWESTERN MENTAL HEALTH CENTER

The Southwestern Mental Health Center provides a broad scope of quality mental health services to our community.

Services provided include:

Community Services

- Adult Rehabilitative Mental Health
- Transitional Living Counseling

Chemical Dependency Treatment

- Relapse Prevention Treatment

Counseling / Therapy

- Individual Therapy
- Marriage & Family counseling
- Evaluation & Assessments
- Support / Therapy Groups
- Employer Assistance Program

Residential Treatment

- Unity House

Crisis Hotline

- 24-Hour Hotline (TDD Line)
- Toll Free 1-800-642-1525
- Walk-In Crisis Intervention

Outreach

- Speakers Bureau
- In-service Training
- Consultation Service

For more information, call (507) 283-9511, visit at 117 S Spring St., or visit www.avera.org/locations/profile/southwestern-mental-health-center-avera-luverne/.

The 24-hour emergency number is 1-800-642-1525.

LUVERNE COUNSELING

Luverne Counseling offers therapeutic services to help individuals resolve problem areas in their lives. Offered counseling sessions include: Individual, Group, Couples, Family, and many others. Luverne Counseling also offers a wide variety of therapy sessions for topics ranging from Brain Spotting, to Depression, Abuse, Assault, and a countless number of other treatment options.

For more information, call (507) 449-6105, visit at 118 W Main St., or visit www.luvernecounseling.com.

HEALING PATH COUNSELING & WELLNESS

Healing Path Counseling & Wellness consists of Licensed Professional Clinical Counselors who provide mental health therapy for a variety of issues. Specialty areas include: trauma, domestic and sexual violence, women's issues, parent education, PTSD, depression, and sexual orientation issues. They also offer individual, couples, family, and group therapy options. Therapists at Healing Path Counseling & Wellness are trained to treat each client in a confidential, compassionate, and professional manner.

For more information, call (507) 449-6144, visit at 215 N Cedar St., or visit www.healingpathluverne.com.

PARKS & RECREATION

LUVERNE AQUATICS & FITNESS

The Aquatic Center Features:

- Swimming Pool ranging from 3 - 11 ft. in depth
- Diving Board
- Rock Climbing Wall
- Frog Slide
- Wading Pool with a Duck Slide
- Hot Tub
- Splash Pad

Aquatic Activities Include:

- Lap Swim
- Senior Swim
- Open Swim
- Swimming Lessons
- Water Walking
- H2O Walk Class

The Fitness Center & Tanning Facility Includes:

- Weight Room – all new equipment
- Cardio Room – all new equipment
- Multi-Purpose Room
- 24/7 Access for Members
- Lay-Down Tanning Bed

Fitness Activities Include:

- Aerobic Classes
- New Instructor-Led Classes
- Bogo Fit
- Cycling
- Tabata
- Yoga

The Luverne Aquatics & Fitness Center is a newly renovated, multi-use recreational facility. The updated fitness and cardio center is filled with brand new, state-of-the-art equipment. The new workout space also offers fitness on demand and is now accessible for members 24/7. The newly renovated locker rooms and changing rooms offer more privacy, along with more space for families to change. In addition to the indoor pool and fitness center, the facility boasts a brand-new outdoor spray ground/splash area for children to play. The Luverne Aquatics & Fitness Center also offers pool party packages and a party room, which are available to rent.

For more information, check out Luverne Area Aquatics & Fitness on Facebook, or go to the city website www.cityofluverne.org/laf.



802 N Blue Mound Ave.
(507) 449-5036

www.cityofluverne.org/laf

Hours

Monday – Friday:

5:00 a.m. – 9:00 p.m.

Saturday: 7:00 a.m. – 7:00 p.m.

Sunday: 1:00 p.m. – 5:00 p.m.

Fitness Members: 24/7 Access

POWER FITNESS

Luverne Power Fitness is a 24-hour fitness establishment open to members. The main floor is filled with treadmills, ellipticals, bikes, Cybex trainers, a stairmaster, stationary weights, free weights, and more. Upstairs includes a dance studio, where senior cardio and Spotlight Dance classes are held for ages 3+. The basement is filled with compound movement equipment for a different style of training. Included in a membership is access to all three levels of fitness.

205 E Main St.
(507) 449-7348
www.luvernepowerfitness.com
For more on dance classes:
(612) 210-0857 or (507) 227-6110
sptlightdance.wixsite.com



CITY PARKS

The City of Luverne claims one of the finest park systems in the state. Throughout the city, there are numerous pocket parks with playground equipment and picnic tables. Altogether, Luverne has over 60 acres of land set aside for public recreation.

The Main City Park is a beautiful wooded area that boasts several playgrounds, an enclosed shelter with water and electricity, 2 open picnic shelters, a softball diamond, volleyball courts, and a full basketball court. Picnic tables and grills are located throughout the park, and a restroom facility is centrally located. A skate park, and the main baseball diamond ("Redbird Field") are located on the west end of City Park, across the Rock River. Also, to the north of the City Park, across Main Street, is Riverside Park. It features two softball diamonds and playground equipment for children.

Veterans Memorial Park lies on the north side of Luverne, nestled in the neighborhood behind the Minnesota Veterans Home. This park features a man-made fishing pond with a fountain aerator, ramp sidewalks providing easy accessibility, a picnic shelter, and a playground with a variety of fun equipment.

In addition to these parks, the City of Luverne also maintains 10 other neighborhood parks: Dragonfly, Evergreen, Prairie Moon, Longhorn, Sitting Bull, Hawkinson, Kolbert, Moccasin, Rotary, and Buffalo Bill. All parks are publicly owned and municipally maintained.



East end of Main St.

For more information, check out www.cityofluverne.org/parks.

SCHONEMAN COUNTY PARK



In addition to the beautiful parks within the city, just south of Luverne on Highway 75 you will find Schoneman County Park. Located at 904 US Hwy 75, there are picnic areas, fishing, and nature walks around this area. The park has become home to a large flock of Canadian geese that return annually to the area to nest.

THE LAKE

The Lake, previously known as the Creamery Pond, is located at 815 W Edgehill St. The Lake boasts a large fishing dock, beach volleyball, playground equipment, room to barbeque, shelter, and a large sandy beach. The Lake is proud to host the annual Fourth of July celebration. Complete with kayaking competitions, barbeques, bean-bag toss, ice cream trucks, a live band, and fireworks show, 4th of July at The Lake is an event to remember and cherish. In the winter months, ice fishing is also a popular activity on The Lake.



To keep updated on The Lake and follow the events, check out the Facebook page:
www.facebook.com/thecreamerypond

BLUE MOUNDS STATE PARK

Blue Mounds State Park is full of natural surprises! Start with the Sioux quartzite cliff, rising 100 feet from the plains. A bison herd grazes on the prairie. Prickly pear cacti bloom in June and July. The park is also a favorite for birdwatchers who want to see nesting blue grosbeaks and other birds.

Enjoy camping, hiking, climbing, biking, as well as the unique sights and wonderful aromas of a beautiful prairie. The park is also rich in history; it even preserves a 1,250-foot-long line of rocks aligned by Plains Indians, which marks where the sun rises and sets on the spring and fall equinox.

The “Bison Buggy” was a new addition to the park that started the summer of 2018. Visitors can travel into the bison range at Blue Mounds State Park on the one-and-a-half-hour-long Prairie and Bison Tour where viewers can experience the sights and smells of the prairie! Learn more about bison, their history, and what makes the bison at Blue Mounds State Park so special on this educational tour. For more information on the tour and reservations, go to: www.dnr.state.mn.us/state_parks/blue_mounds/prairie-and-bison-tour.html



1410 161st St.
 Phone: (507) 283-6050
 Fax: (507) 283-1306
 Camping Reservations:
 1-866-85PARKS
bluemounds.statepark@state.mn.us

The park is located 4 miles north of Luverne on Hwy. 75 and 1 mile east on County Road 20.

BLUE MOUND TRAIL

The Blue Mound Hiking and Biking trail starts at the intersection of Main Street and Blue Mound Avenue and continues north going out of town, wrapping around the Blue Mound State Park and the Quarry. This very scenic trail has a distance of approximately 6 miles and is a great spot for biking, skating, jogging, or walking.



ASHBY TRAIL

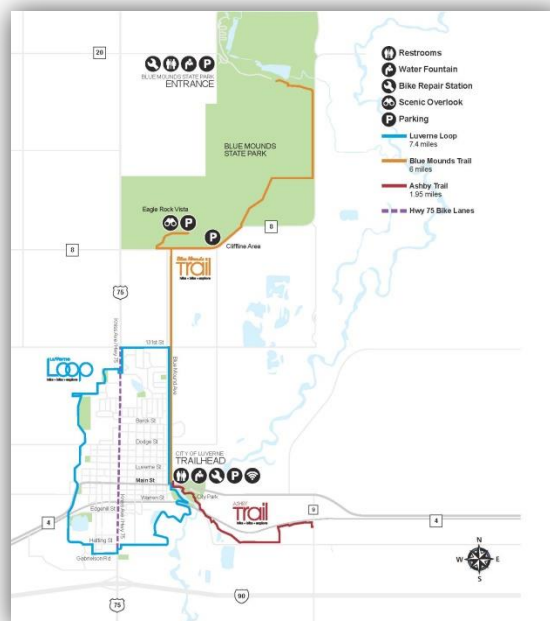
The Ashby Trail, also known as the Christopher Martin Ashby Memorial Trial, is a memorial path inspired by Gene and Barb Ashby to remember their son Chris, an avid bicyclist. The scenic trail is 1.95 miles long and starts on the east side of the Rock River. The trail winds through the Luverne City Park and then heads east of Luverne, along Rock River Road, ending at County Road 9.



LUVERNE LOOP

The Luverne Loop offers 7.4 miles of trail around the outskirts of the city. By linking to the Blue Mounds Trail, the Loop provides residents and visitors of all ages with a safe, natural place for healthy recreation and transportation that connects areas of interest and hidden gems within the community. Points of interest include: Childhood Remembrance Garden, Veterans Pond, Prairie View Complex, The Lake, Rock River, and Redbird Field. Trail users can access the Loop by parking at the Trailhead or at other public parking places along the route.

For more information on the Luverne Loop and the Blue Mounds Trail, go to www.cityofluverne.org/trails.



DISC GOLF COURSE

One of Luverne's newest additions to recreational activities is a 9-hole disc golf course. The new course is open year-round to anyone looking for fun. The course is located west of Luverne Public Schools on West Dodge St. Playing a quick round of disc golf is made easy with the UDisc Golf App, found on the App Store and the Google Play Store. The app helps to keep scores, track stats, and find other courses.

For more information on the disc golf course, go to www.cityofluverne.org



LUVERNE E-BIKES

Another recent addition to Luverne's recreational possibilities includes the Luverne Electronic Bike Rental program. Anyone may now rent out 1 of the 8 bikes. The bikes come in 4 sizes – S, M, L, XL – and may be rented out hourly at the cost of \$10 per bike per hour. The rental process is made easy through Luverne Aquatics and Fitness.

More information on Luverne's Electronic Bicycles and Trail Systems can be found at www.cityofluverne.org/ebikes or www.cityofluverne.org/trails



802 N Blue Mound Ave.
(507) 449-5036

www.cityofluverne.org/laf



ROLL ON LUVERNE

Roll on Luverne is a bike assistance program that allows riders to borrow bikes for up to 24 hours free of charge. Bikes can be picked up at the Grandstay Hotel and loaned to individuals who sign a waiver and leave a drivers license or credit card. Roll on Luverne offers 8 adult bikes, 4 youth bikes, 2 adult trikes, and 1 tandem bike.



*Roll On Luverne
Grandstay Hotel
908 S Kniss Ave*

ELECTRIC VEHICLE STATION

Luverne has recently partnered with Missouri River Energy Services to purchase the city's first Electric Vehicle Charging Station. The brand-new level 2 EV charging station is located at the new Luverne Loop Trailhead parking lot, 601 E Main St. The charging station is available to any resident of Luverne or anybody passing through Luverne. With 2 charging ports available, multiple vehicles can be charged at a time.

For more information about EV chargers and rebates, visit bes.chooseev.com/ev/home/.



*Luverne Loop Trailhead
601 E Main St.*



ASSISTED LIVING - NURSING HOME FACILITIES - SPECIAL HOUSING

GOOD SAMARITAN SOCIETY - LUVERNE

"In Christ's Love, Everyone is Someone"

The Mary Jane Brown Home, operated by the Good Samaritan Society, is a seventy-bed intermediate care facility for the elderly. This facility is Medicare certified. The staff provides 24-hour nursing services by trained and licensed nurses, dietary services, housekeeping, laundry, speech, occupational and physical therapies, social services, and activity programs for all residents according to their needs. A congregate care facility is also a service associated with the Good Samaritan Society.



110 S Walnut Ave.
(507) 283-2375

CONGREGATE CARE - THE OAKS

In December of 1997, the Mary Jane Brown Home extended its services and opened The Oaks. Across the street from its health care facility, The Oaks provides 28 spacious one and two-bedroom senior living apartments. Housekeeping, linen laundry, scheduled transportation, and noon meal service are just a few of the amenities included in the monthly rental fee. Spacious, beautiful grounds surround the apartments, where people live independently. Common areas provide community dining, lounge space, a library, activity room, beauty salon, exercise room, and laundry facilities. Residents of The Oaks may participate in scheduled programs, activities, and outings as they desire. There is someone on staff during the day, but 24-hour care is not provided. Individual apartments and beautiful rooms provide a relaxing and maintenance-free retirement.



203 Oak Dr.
(507) 283-1991

ASSISTED LIVING - POPLAR CREEK ESTATES

Poplar Creek is a 24-unit apartment complex that gives residents independent living as well as assistance with everyday living. The facility is directly connected to The Oaks. Poplar Creek provides its residents with 24-hour supervision, along with medication assistance and 3 meals a day. It was created for residents who needed more than what The Oaks provided but did not need the full nursing home care of the Mary Jane Brown Home. The beautiful apartments provide a relaxing assisted living environment.

201 Oak Dr.
(507) 283-1996

MINNESOTA VETERANS HOME

The Vets Home provides skilled nursing care for honorably discharged veterans (or spouses of veterans) that entered the service from Minnesota or are residents of Minnesota. This facility in Luverne is equipped with 85 nursing care beds and provides services such as: an Attending physician, Medical Director, physical therapy, occupational therapy, annual dental exam, laundry, housekeeping, recreation, dietary services, nursing services, social work, transportation to appointments, medications, medical supplies, and chaplain services. In May of 2008, the Vet's Home finished an expansion of their Alzheimer's unit. They added a 3-car garage and a 1,500 square foot day room complete with a kitchenette, activity room, fireplace, and a big screen TV.



1300 N Kniss Ave.
PO Box 539
(507) 283-6200

For more information, go to <http://mn.gov/mdva/homes/luverne/>.

OASIS CARE HOME

The Oasis Care Home provides personalized senior care in a beautiful home-like setting. The home offers long term care to clients who are elderly and are in need of assistance. Oasis provides a variety of different services, including skilled nursing care, medication management, housekeeping, meal preparation, socialization, and many other exceptional services. The home offers comfort and privacy to clients by providing them with their own private bedroom, connected to a shared Jack and Jill style bathroom. The care home also assists clients by providing transportation.

514 Britz Dr.
Luverne, MN 56156
(507) 449-6154

For more information, go to www.OasisCareHomeMN.com.

DEVELOPMENTAL DISABILITY FACILITIES

Habilitative Services, Inc. (HSI) is a professional organization dedicated to supporting individuals in their pursuit of personal achievement and well-being. HSI provides housing and independent living skills for individuals with developmental disabilities. There are currently 7 licensed houses offering care in Luverne.

For additional details about H.S.I., contact (507) 283-1859 or stop in at 123 W. Main St.

Client Community Services, Inc. is another professional housing provider with 2 locations in Luverne, MN. CCSI's main offices are located in Worthington at 826 5th Ave.

For more information on CCSI, visit their website, www.clientcommunityservices.org, email them at ccsi@clientcommunityservices.org, or call (507) 376-3171.

Hiawatha Manor, Inc. is Luverne's 3rd professional home-care provider. Hiawatha Manor is based out of Pipestone, MN, but they have one home located in Luverne.

For more information on Hiawatha Manor, Inc., call (507) 825-9905.

HOUSING

Luverne has four low-income housing opportunities for families and individuals:

- Rock Creek Town Homes, (507) 283-4746 or <http://lloydmanagementinc.com>
- Blue Mound Tower, (507) 283-4922 or luvernehra@iw.net
- Stone Creek Town Homes, (507) 283-4793 or <http://lloydmanagementinc.com>
- Centennial Apartments, (507) 283-2652 or <http://lloydmanagementinc.com>

Housing information may be obtained from the following real estate agents:

Graphenteen Real Estate Group
6225 S Minnesota Ave,
Sioux Falls, SD 57108
(507) 227-1802
anthony.hegg.com/

Jensen Management Service Inc. Real
Estate
111 N Cedar St.
(507) 283-2391
www.jensenkorth.com

Land and Home Realty
130 S Kniss Ave.
(507) 449-6111
www.landandhomerealty.com.

Real Estate Retrievers
615 S Kniss Ave.
(507) 283-4216
www.realestateretrievers.com

SPECIAL SERVICES

SOUTHWEST HEALTH & HUMAN SERVICES

The Southwest Health and Human Services mission is to bring people together to create healthy families for a better community. They offer their services to all citizens, individuals and groups. Some of their services include: home health care, disease prevention and control, family health, environmental health, emergency medical service coordination, and health promotion. Their excellent staff includes nurses, health educators, and a public health sanitarian. They perform family visits and will answer any questions in relation to family and child problems. Services designed specifically for the family include WIC (Women, Infants & Children), CTC (Child & Teen Checkups), EIP (Early Intervention Program), immunizations, and much more. Public Health is a service targeted for the families in our community.



2 Roundwind Rd.
(507) 283-5066
Open Monday - Friday 8:00 a.m. - 4:30 p.m.
www.swmhhs.com

The Southwest Health and Human Services have greatly improved in identifying, developing, implementing, and evaluating services to meet the changing needs of Rock County citizens and our society. Their services include adoption, foster care, day care information, elderly services, protection for vulnerable children and adults, chemical dependency services, services for developmentally disabled persons, services for persons with mental illnesses, income maintenance services, and child support services.

For after hour and weekends, contact the Rock County Sheriff's office at (507) 283-5000 and the social worker on call will be contacted.

SOUTHWEST CRISIS CENTER

The SWCC provides direct services to primary and secondary survivors and victims of domestic violence, sexual assault, sex trafficking, labor trafficking, sexual harassment, stalking, and child abuse. They are the initial contact for victims in crisis through their 24-hour safe line, as well as through referrals from law enforcement, medical personnel, court administration, and other agencies, such as churches, health & human service groups, and mental health centers; many victims also “walk-in.” There are no age limitations on services. They also have a youth program, which is designed to provide services, outreach, and education to youth, families, schools, and communities.

The SWCC serves residents of Jackson, Cottonwood, Nobles, Rock, and Pipestone counties. Their primary purpose is to serve any and all victims who seek services (unless a conflict of interest is present), including those who have immigrant and refugee status (English and non-English speaking).

*For more information, visit <http://www.mnswcc.org/>.
To reach the Luverne SWCC for questions or help, call (507)-283-9917.*

24-Hour Safeline: (800) 376-4311 Youth Text Line: (218)-666-8336

ROCK COUNTY OPPORTUNITIES

Rock County Opportunities, located at 807 W Main St., provides valuable, person-centered services in the areas of employment support, community integration, and enrichment for people with physical and developmental disabilities, traumatic brain injuries, and mental health diagnoses. RCO offers an employment program to provide paid jobs to their clients, life enrichment opportunities for individual and group exploration, and client transportation.

RCO offers laundry services for both commercial and individual clients within the Luverne community. The partnership with The Laundry Room helps the RCO clients secure employment, develop their work skills, and move toward greater independence in their lives.



For more information, visit www.rockcountyopp.com, call (507) 283-4582, or email info@rockcountyopp.com.

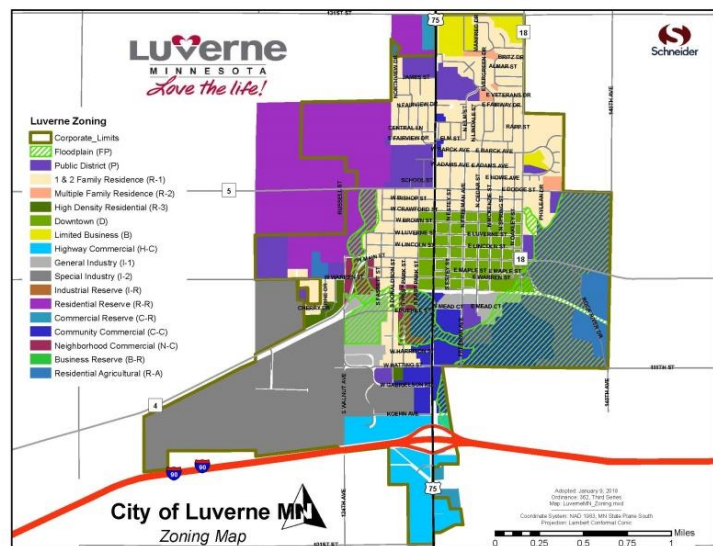
REGULATIONS

ANIMAL CONTROL

Any owner of a dog that is over six-months old must obtain a current city pet license from the City Offices (305 E Luverne St.). Documentation of the immunization for rabies is required when applying for the annual license. Online payments are accepted at www.cityofluverne.org/payment. In respect for your neighbors, dogs must be leashed and cannot be allowed to excessively bark, whine, or howl.

BUILDING REGULATIONS / ZONING LAWS

Any property owner, contractor, or tenant who intends to construct, enlarge, alter, repair, move, demolish, or change the occupancy of any building or structure, shall first make application to the building official and obtain any and all required permits. A permit application can be obtained from the building and zoning department, which is located at the Luverne City Offices. A permit must be obtained prior to the commencement of any construction or demolition. All Minnesota State Building Codes and/or City Ordinances apply. Online payments are accepted at www.cityofluverne.org/payment.



For more information, contact Building / Zoning Official, Chad McClure at (507) 449-5031, email at cmccclure@cityofluverne.org, or visit online at www.cityofluverne.org/buildingzoning.

WATER RESTRICTIONS

A city ordinance was passed that restricts the hours of water sprinkling. According to the ordinance, water may not be used from the city water system for lawn sprinkling between the hours of 8:00 a.m. and 8:00 p.m., with the exceptions of new lawns, seedlings, sod, and hand gardening sprinkling. Watering is allowed for even numbered addresses on even numbered days between the hours of 8:00 p.m. - 8:00 a.m. (evening and morning), and odd number days for odd numbered addresses. Property in a homeowner association may water on even numbered days regardless of an even or odd house number.

BIKES / ROLLERBLADES / SKATEBOARDS

It is prohibited in Luverne to skateboard, ride a bicycle, roller skate, or rollerblade in the Business District. The Business District is the area south of Lincoln Street, north of Maple Street, east of Estey Street, and west of Blue Mound Avenue. This area is depicted by a sign on the sidewalk containing a bicycle with a red line through it.



DRIVER'S LICENSE / MOTOR VEHICLES

Located in the Rock County Courthouse is the driver's license and motor vehicles office. The office takes care of motor vehicle registration, drivers' licenses, permits, ID cards, DNR registration of off-road vehicles, and game & fish license agents.

<p>Rock County Courthouse 204 E Brown St. PO Box 509 (507) 935-7006</p>
--

CURFEW

No one under the age of 18 is permitted to be on any public street, alley, public sidewalk, or in any park, public ground, or building between the hours of 12:00 a.m. and 6:00 a.m. People under 16 cannot be at these places between 10:00 p.m. and 6:00 a.m. on weekdays and between 11:00 p.m. and 6:00 a.m. on Fridays and Saturdays. Exceptions are made if the person is accompanied by a parent or guardian, if they are on an emergency errand, or if they are going directly home after school, religious, or voluntary activities. Most fines are \$30 or require the person to attend a class.

PUBLIC SERVICES

PUBLIC RESTROOMS

There are three public restrooms located downtown on Main Street:

- 106 E Main Street - Located adjacent to the Palace Theatre, the restroom shares a building with the Palace Theatre Box Office.
- 203 E Main Street – Found inside the front entry.
- 601 E Main Street – The Luverne Loop Trailhead is located at the intersection of Main Street and Blue Mound Avenue.

UNITED STATES POST OFFICE

407 E Lincoln St.

Phone: 507-283-2186

Toll-free: 800-ASK-USPS
(800-275-8777)

Fax: (507) 283-4952

www.usps.com



Post Office Hours:

Monday - Friday:	8:30 a.m. – 4:30 p.m.
Saturday:	9:15 a.m. – 11:15 a.m.
Sunday:	Closed

TELEPHONE SERVICES

Luverne has three telephone providers: bluepeak, CenturyLink, and Mediacom.



No Local Office
Drop box available for payments
and equipment at:
114 E Lincoln St.
(888) 745-2888

No Local Office
(855) 302-1644

No Local Office
Drop box available for payments
at Sunshine Foods
(800) 332-0245

WIRELESS / INTERNET PROVIDERS

Luverne also has several internet carriers: bluepeak, Mediacom, CenturyLink, and one local cellular provider, BeMobile Inc.



BeMobile Inc. – Verizon
Authorized Retailer
626 S Kniss Ave. #101
Phone: (507) 283-0066

CABLE PROVIDERS

Cable TV can be ordered from Mediacom or bluepeak. Mediacom offers 150 channels, including a local community calendar and three optional movie channels. Bluepeak offers three different TV packages, which includes three streams and 50 hours of recordings.



Drop off only at 114 E Lincoln St.
For payments and equipment, call
(888) 745-2888

NATURAL GAS



Gas services are provided by CenterPoint Energy
Phone: 1-800-245-2377
For 24-hour emergency gas leak, call 1-800-296-9815.
No local office or payment drop box available.

MUNICIPAL UTILITIES

Luverne Municipal Utilities

(507) 449-2388

New residents of Luverne must sign up for utilities and satisfy security deposit requirements.

Services provided: electric, water, sewer, garbage, and recycling.

For more information and to complete the Application for Utilities, visit us at

www.cityofluverne.org/new.

ELECTRIC

In Luverne, we have an asset that brings revenue and so much more into our community every hour of every day. It is our locally owned, locally controlled electric utility. Luverne Municipal Electric meets the City's power requirements from two sources: Western Area Power Agency and Missouri River Energy Services. The Luverne Electric System uses both long-term and low-cost hydro and coal based electric power, as well as a maintained and planned local distribution system.

WATER

Water and water treatment are also municipal utility services provided by the City of Luverne. The Luverne Water Department plans for the ongoing operation and maintenance of the Water Utility. The City of Luverne participates in the Lewis & Clark Rural Water System project to bring a long-term quality water supply from the Missouri River to our community. The Department actively promotes water conservation.

SEWER

The Wastewater Department (Sewer Utility) covers all aspects of wastewater treatment governed by state and local statute here in Luverne. The Wastewater Department plans for and anticipates the needs of the ongoing operation and maintenance of the Wastewater Utility. Significant wastewater improvements have been made during the past decade, and the City Council has adopted long term improvement plans.

REBATE PROGRAMS

Luverne Municipal Utilities encourages residents to install energy efficient appliances in their homes. Rebates are available on the following ***ENERGY STAR Certified appliances***:

Air Purifier	\$25.00
High Efficiency Water-Sense Toilet	\$75.00
Clothes Washer	\$25.00
Room Air Conditioner	\$25.00
Dehumidifier	\$25.00
LED bulbs, LED recessed can fixture or retrofit kit	\$1.50-\$4.00
Smart Thermostat	\$25.00
A/C or Heat Pump Tune-Up (every 2 or more years)	\$30.00
Charge-Point Home Electric Vehicle Charger	\$500.00
Air-Source Heat Pump	\$150-\$1300
Geothermal Heat Pump	\$200 per ton
Heat Pump Water Heater	\$150
Central Air Conditioner	\$150-\$400

Many incentive programs for businesses are also available.
*Rebates subject to change

Visit us at
www.cityofluverne.org/rebates

CREDIT POLICY FOR RESIDENTIAL CUSTOMERS

When you apply for utility service, you are agreeing to certain terms for service and payment. You will be asked to give certain information, including your spouse's name (when appropriate), place of employment, and positive identification.

A deposit is required on all accounts unless you have a prompt payment history with Luverne Municipal Utilities or your prior utility provider supplies us with a credit history indicating prompt payment history for 12 preceding months. Immediate authorization to have ACH automatic monthly payment of utility bill will waive the deposit or the minimum deposit as follows:

RESIDENTIAL UTILITY DEPOSITS:

Electric Service	\$141.00
Electric Heat Service	\$377.00
Apartments with Electric Heat	\$272.00
Water Service	\$62.50
Sewage Service	\$62.50
Refuse Service	\$27.50

<p>Utility payments can be made online at www.cityofluverne.org/payment, by phone at 1-800-282-0821, or by drop off at the Payment Box on McKenzie St.</p>

Payments for all utility services, offered by the City of Luverne, are due on the 8th of each month. Your deposit, plus any accrued interest, will be credited to your account after 12 consecutive months of prompt payment. Interest is paid on the amount required in Minnesota Statutes Section 325E.02.

PUBLIC WORKS

The Public Works Department maintains and manages the parks and recreation, streets, storm sewer, utility, vehicle and building repair and maintenance, and refuse and recycling collections. The department works with engineers, city officials, and the public in the development of long-range plans and programs. John Stoffel is currently serving as Public Works Supervisor for the City of Luverne. The Public Works supervisor coordinates the purchase of necessary supplies and equipment. They also provide efficient and timely maintenance and repair of all city vehicles and Public Works equipment.



Public Works Supervisor:
(507) 449-5043

ROCK COUNTY TRANSFER STATION

The Rock County Transfer Station and Composting site is available to all Rock County residents. The Transfer Station accepts waste and recyclables such as household garbage, demolition waste, tires, appliances, scrap metal, motor oil, and motor oil filters. However, these items come with a charge that is determined by weight and varies from item to item. The Transfer Station also accepts waste materials such as leaves, garden waste, lawn clippings, and small shrub pruning free of charge. Plastic bags are prohibited and yard waste must be completely separated from containers and bags at the site. Also prohibited, are tree branches or any other solid wastes mixed with yard waste.

(507) 283-5005

1236 N River Rd.

¾ miles east of Luverne (past the City Park) and 1.5 miles north on County Road 9

Open 8:30 a.m. - 4:00 p.m. Monday - Friday

HOUSEHOLD HAZARDOUS WASTE FACILITY

The HHW facility is part of the Rock County Transfer Station and is a place to bring any hazardous wastes, such as aerosol containers, antifreeze, cleaners, fertilizers for lawn and garden, lighter fluid, and latex and oil-based paints. However, this facility is only open the 1st and 3rd Thursday of every month by appointment only. To make an appointment or ask any questions, call Rock County Land Management Office at (507) 283-8862, ext.3, or stop in at 311 West Gabrielson Road.

RECYCLING

Recycling is a requirement for all Luverne residents. The City of Luverne has Single-Stream Recycling. The 90-gallon container has no weight limit and eliminates the need for separation of recyclables. Boxes must be broken down, and the bin's lid must be closed. Recycling pickup is twice a month on Friday. Sometimes, there will be a three week wait for pickup. The recycling truck leaves early in the morning and has no set route, so you will want to have your recycling container out the night before your pickup day.

If you have any questions, contact Luverne City Offices at (507) 449-2388. More information can be found on www.cityofluverne.org.

*****For specific date changes due to holidays or other events, please refer to the *Luverne Outlook* monthly newsletter found at www.cityofluverne.org/outlook.**

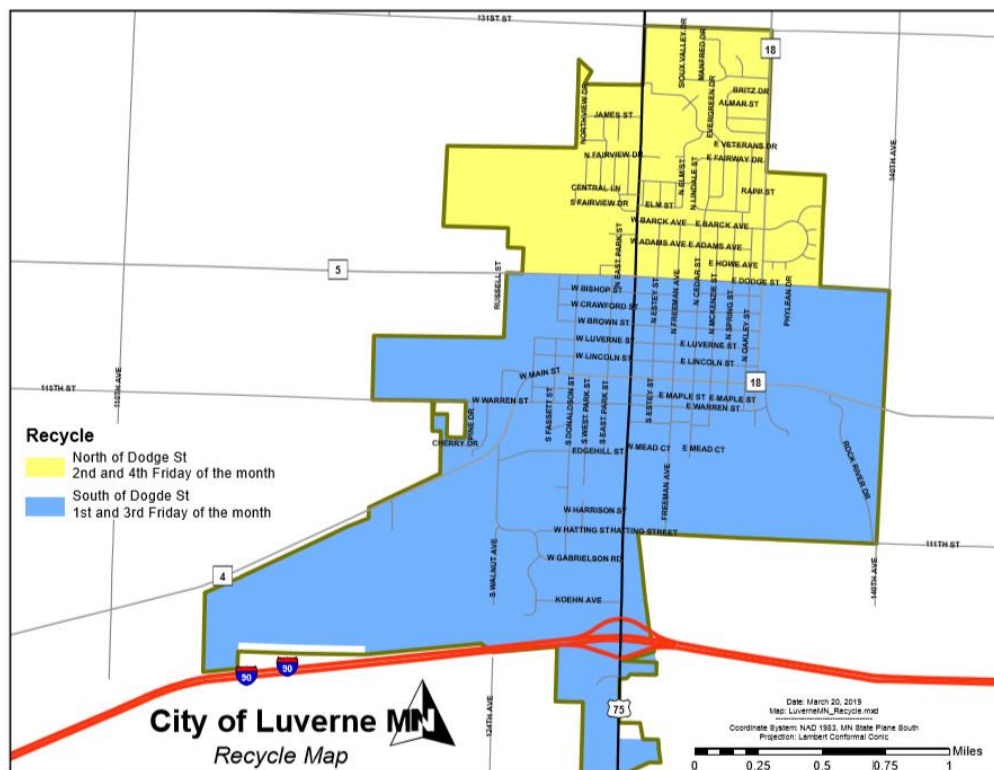
Please be responsible and recycle properly!

Acceptable Items

- Plastic Bottles, Tubs, & Containers
- Glass Jars & Bottles
- Cardboard & Paperboard
- Newspapers & Mixed Papers

Not Acceptable Items

- Electronics
- Bio-hazardous Waste
- Toys
- Ceramics, Rocks & Stones



REFUSE

To help conserve space in landfills and comply with Minnesota State landfill bans, the City of Luverne has a curbside refuse program. The garbage and recycling cannot be placed together; it is the law. The City of Luverne uses automated garbage trucks. A robotic arm grabs the container, lifts it above the truck, and dumps the material before returning the container. Special large green containers are provided and can be easily wheeled around for curbside pick-up.

Garbage is collected on Tuesday, Wednesday, and Thursday, depending on where you live in town. To find your pick-up day, please check the enclosed map. For specific date changes due to holidays or other events in the pickup schedule, please refer to your utility bill, the *Luverne Outlook* monthly newsletter, Facebook, or www.cityofluverne.org.

Each household is provided with a 60-gallon container (no more than 65 pounds). A 90-gallon container cannot weigh more than 100 pounds. If it is lost or stolen, it is your responsibility to purchase a new one. If it is damaged, Public Works may be able to repair it. Call the City Offices at (507) 449-2388 to have the Public Works department pick it up. Pick up includes recyclable material, yard waste, special city-wide pickup (for example, storm clean ups), and general refuse. The City of Luverne refuse and recycling charges can be found below and are included in your utility payments. Residents are asked to keep garbage cans in their garage, backyard, or out of sight.

<i>Dwelling Type</i>	<i>Refuse Charge per month</i>	<i>Recycling Charge per month</i>
All homesteads Single / Multi-family residences (With 25 or fewer dwelling units)	\$23.76	\$7.44
Apartments - non-homestead (With 25 or more dwelling units)	\$20.07	\$6.12

The above charges cover the cost of pick up for:

- Recyclable material
- Special city-wide pickup (for example, storm clean ups)
- General refuse

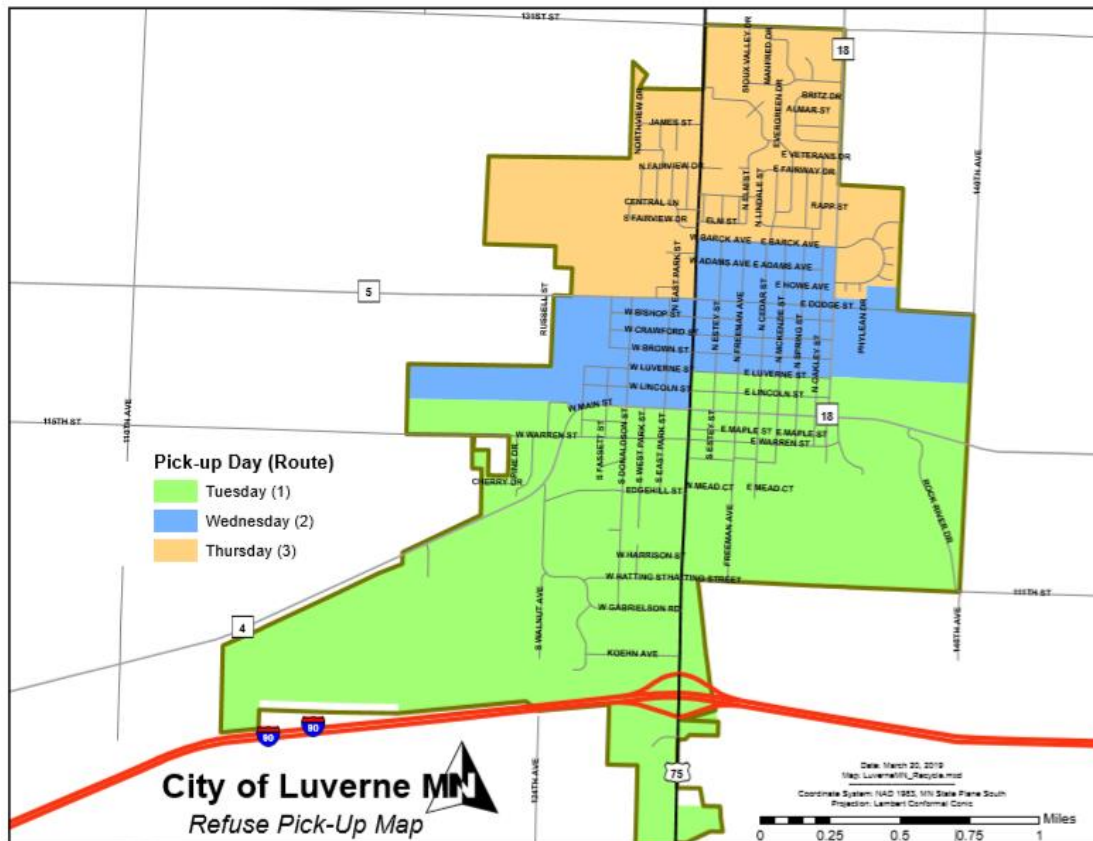
Provided 90-gallon container with a maximum weight of 100 lbs. per week - Refuse \$34.86 per month

Provided 300-gallon container with a maximum weight of 250 lbs. per week - Refuse \$86.84 per month

Special pickups (300-gallon dumpster of city approved items) Minimum charge for 2 months No demolition or construction material	
Number of Containers	Cost
1 - 2	\$77.18
3 - 4	\$145.87
5 - 6	\$214.16
Charge to Empty a Container	\$36.50 per Time / Container

Holidays that may affect the pickup schedule:

<i>Holiday</i>	<i>2023</i>	<i>2024</i>
New Year's Day	Sunday, January 1	Monday, January 1
Martin Luther King Day	Monday, January 16	Monday, January 15
President's Day	Monday, February 20	Monday, February 19
Memorial Day	Monday, May 29	Monday, May 27
Juneteenth	Monday, June 19	Wednesday, June 19
Independence Day	Tuesday, July 4	Thursday, July 4
Labor Day	Monday, September 4	Monday, September 2
Veteran's Day	Saturday, November 11	Monday, November 11
Thanksgiving Day	Thursday, November 23	Thursday, November 28
Christmas Day	Monday, December 25	Wednesday, December 25



FALL LEAF PICKUP

Every fall, the city assigns a few weeks in October to pick up any unwanted leaves. City residents have the opportunity to rake leaves from their lawns onto the curb, where the city will then dispose of them properly. Watch for dates on your utility bill, in the Outlook Newsletter, on Facebook, or at www.cityofluverne.org.

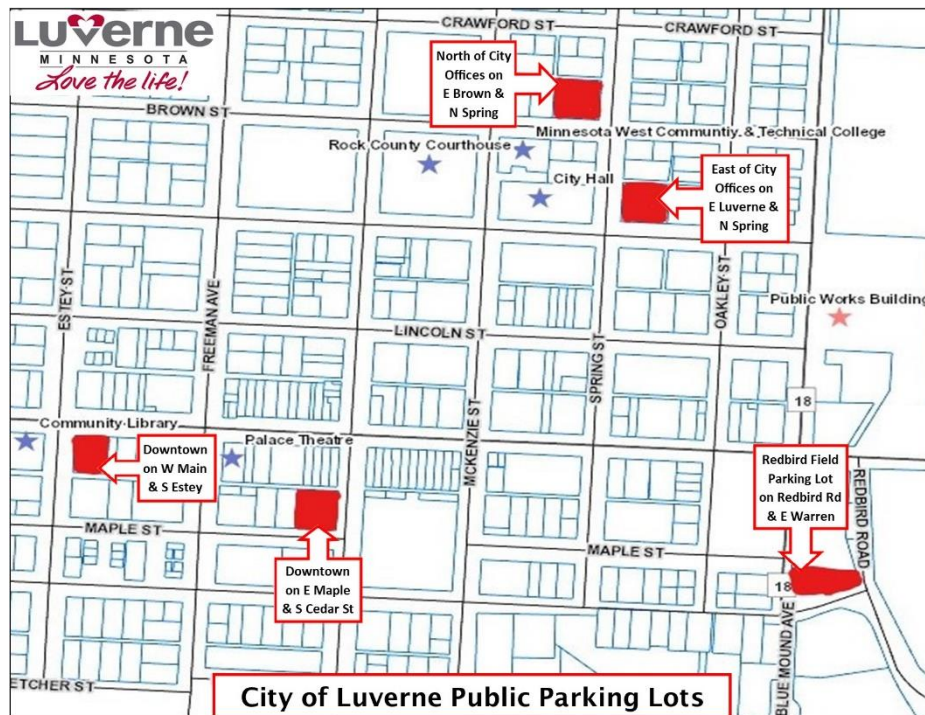
SPRING CLEAN UP

Luverne has a “Spring Clean-Up” that gives residents the chance to get rid of large items and junk that cannot be normally disposed of, such as any big appliances, furniture, etc. Spring cleanup week usually falls sometime in the middle or end of April. Garbage items are still to be placed in the garbage.

SNOW REMOVAL

There are two types of snow events that the City may issue: Snow Alert or Snow Emergency. Vehicles should be removed from the streets during the occurrence of either event so the streets can be properly cleaned. Parking violation tickets will be issued during a Snow Emergency. Information on snow events / removal can be found on any of the following: KQAD, K101, KELO, KSFY, LuvTV, Facebook, or www.cityofluverne.org. More information on weather related events can be found on <https://local.nixle.com/city/mn/luverne/>.

It is the responsibility of all motorists to arrange off-street parking so the Public Works Department can plow the city streets. Please remove your vehicle from the street if it’s snowing, if snow is in the forecast, or if you’ll be out of town. Off-street public parking is available in city-owned lots throughout Luverne. Vehicles cannot be parked at these locations for more than 24 hours at a time.



TREE BRANCHES & COMPOST

It is against both Minnesota law and city ordinances to leave mowed grass in the street, or mow it into the street. Tree branches, grass, and leaves may be hauled to the city tree pile one mile south of Luverne on Highway 75 behind Water Treatment Plant #2 and across from the Rock County Veterinary Clinic. This dumpsite is for Luverne residents' use only and is open year-round.

The Luverne City Offices may be reached at (507) 449-2388 for more information.

MOSQUITO SPRAYING

In order to keep the mosquito populations down in the summer, the city will occasionally spray for them in the evenings. The mosquito spraying frequency is dependent on the severity of the mosquitos each year. Sprayings will be announced ahead of time on KQAD 800AM, KLQL 101.1FM, or the City of Luverne Facebook page.

EDUCATION

SCHOOL SYSTEM

Independent School District No. 2184, Luverne Public Schools, offers a wide curriculum to its students, in addition to many extracurricular activities. If you have any questions or wish to receive enrollment information, contact the following people, or visit the school website at www.isd2184.net.

Stacy Gillette, Principal
Luverne Elementary School
709 N Kniss Ave.
(507) 283-4497
s.gillette@isd2184.net

Jason Phelps, Principal
Luverne Middle School
709 N Kniss Ave.
(507) 283-4491
j.phelps@isd2184.net

Ryan Johnson, Principal
Luverne High School
709 N Kniss Ave.
(507) 283-4491
r.johnson@isd2184.net

Craig Oftedahl, Superintendent
Luverne Public Schools
709 N Kniss Ave.
(507) 283-8088
c.oftedahl@isd2184.net

Todd Oye
Dean of Students /Activities Director
Luverne Public Schools
709 N Kniss Ave.
(507) 283-4491
t.oye@isd2184.net

School Board

Tim Jarchow, Chair
(507) 220-1310
t.jarchow@isd2184.net

Ryan DeBates, Director
(605) 290-0612
r.debates@isd2184.net

Eric Hartman, Vice Chair
(507) 935-5386
e.hartman@isd2184.net

Zach Nolz, Director
(507) 770-3445
z.nolz@isd2184.net

Michael DeBates, Treasurer
(507) 920-6171
m.debates@isd2184.net

Randy Saker, Director
(605) 261-4050
r.saker@isd2184.net

David Wrigg, Clerk
(507) 920-7446
d.wrigg@isd2184.net

ELEMENTARY SCHOOL

The Luverne Elementary School administers to students with all needs in preschool through grade 5. Specialists assist in the areas of learning disabilities, speech, music, adaptive & regular physical education, elementary counseling, gifted programs, and art coordination. The elementary school opened in January of 1999 and is connected to the newly remodeled middle and high school through the commons.



MIDDLE SCHOOL

The Luverne Middle School, consisting of students in grades 6 - 8, is located in the same building as the high school. Grades 6 - 8 are kept separate from the high school students and follow a schedule of their own. Luverne Middle School offers a unique program called Encore; a system of classes set up for interests of the students. Students have the opportunity to choose from a variety of Encore Classes to be a part of their everyday curriculum.

HIGH SCHOOL

The Luverne High School houses students in grades 9 - 12 and is a fully accredited member of the North Central Association of Colleges and Schools. Luverne consistently graduates over 95% of seniors and boasts the highest ACT scores in Southwest Minnesota. Strong and challenging academic courses in math, science, communications, and social studies are a part of the curriculum offerings. Vocational training and practical skills courses, such as home economics, business, industrial arts, and agriculture are also offered.

In addition, courses in fine arts, foreign languages, computer sciences, special education, and a variety of alternative programs are provided to meet each student's individual needs. Advanced placement classes are also offered along with college credit capability from Minnesota West and Southwest Minnesota State University. Athletics, speech, drama, and music are a part of the broad variety of extracurricular activities offered. The National Honor Society, Peer Helping, BPA, FCCLA, FFA, and a variety of other clubs provide social and organization experiences.

The Luverne Middle and High School has recently undergone a massive renovation, making it one of the nicest schools in the area. The updated school offers a brand-new commons and cafeteria space, as well as a state-of-the-art performing arts center. Renovations have been done to all classrooms to enhance students' learning experiences, and new spaces, such as an outstanding weight-room facility and learning commons centers, have been added throughout the school, making it a great place to learn.



ALTERNATIVE LEARNING CENTER

Alternative Education recognizes that everyone does not learn in the same way and should not be taught in the same way using a common curriculum. The Alternative Learning Program is set up to meet the needs of "at risk" students in a nontraditional school setting, enabling them to find the success they have been unable to achieve in a traditional school setting. All students will receive a quality education in a caring, accepting environment that recognizes individual differences. Students will also acquire positive attitudes towards themselves and others that will enable them to continue learning in a complex and ever-changing society.

To acquire more information, call Craig Oftedahl at (507) 283-8088.

Director: Craig Oftedahl
Luverne Alternative School

Hours: Open Monday –
Thursday during the school
year. Summer hours are based
on the needs of the students.

COMMUNITY EDUCATION PRESCHOOL

Community Education
Luverne Public Schools
709 N Kniss Ave.
(507) 283-4724

Discovery Time

Discovery Time is a Pre-kindergarten Program for 3, 4, and 5-year-old children. It is a Community Education program under the direction of a certified pre-kindergarten teacher, along with one assistant. There are different options to the sessions that work best for you. It offers growth in the following areas of development: Social Skills, Language and Literacy Skills, Physical Skills, Aesthetic Skills, and Cognitive Skills.

For more information, visit https://comed.isd2184.net/preschool_programs.

Early Childhood Family Education (ECFE)

ECFE is a class for parents and their children from birth to kindergarten age. It is education, support, and friendship for parents. ECFE specializes in guidance and support for families that comes from licensed early childhood and parent educators. It is learning through appropriate lay activities for children and a program offered in all districts in Minnesota. ECFE encourages positive parental interactions that impact how children develop and learn.

For more information, visit https://comed.isd2184.net/preschool_programs/ecfe.

Head Start

Head Start is a child development program for 3 and 4-year-olds, including children with special needs. Head Start also offers services to the family. Parents may take part in special trainings and events that help them learn and grow. Parents and teachers work together to plan appropriate activities so children learn to accept themselves and others and explore their world.

For more information, call (507) 376-4195, or visit <http://eclkc.ohs.acf.hhs.gov/hslc/hs/about/>.

LITTLE LAMBS PRESCHOOL

“Glorify God by teaching, preaching, and learning His Word in its truth and purity”



Little Lambs is a Christian based preschool program that is held in the St. John Lutheran Church. Their mission statement is to “Glorify God by teaching, preaching, and learning His Word in its truth and purity.” The kids have a fun biblical lesson every day and participate in many educational activities. It is a great chance for children to begin to learn about God and his love for them.

For more information, call (507) 283-2316, email littlelambs@iw.net, or visit <http://www.littlelambscllc.org/>.

COMMUNITY EDUCATION

“Lifelong Learning for Everyone”

Community Education is a wonderful part of the Luverne School District. Organized to develop and coordinate community-based agencies, Community Education provides a high quality of life for all parts of Luverne. This is established through balanced programs in all areas of enrichment, cultural and civic affairs, and / or social services. Community Education offers various programs for people of all ages, including summer recreational programs and Parent-Child-Chain. Other activities offered through Community Education are Drivers Ed, Defensive Driving, Mommy & Me in the Kitchen, sports for ages 5 and up, and a Shape Up Challenge for adults. Brochures are inserted in the Luverne Announcer on Labor Day, New Year's Day, and end of April. They can also be found on the Community Education school website: comed.isd2184.net/

Office Hours are as follows:

Monday – Friday
8:00 a.m. - 4:30 p.m.
24 hour drop box
(located to the left of outside door)

Lisa Nath, Director

Jon Schomacker, Summer Rec.

Director

Phone: (507) 283-4724

Fax: (507) 283-2413

www.isd2184.net

li.nath@isd2184.net

MINNESOTA WEST

Minnesota West Community and Technical College is located at 311 N Spring St. Minnesota West's main entrance is located on the north side of the city office. The first classes taught in this building started in June 2007. This is a great educational opportunity for both traditional and non-traditional students. Currently, programs in Radiologic Tech, Surgical Tech, Med Lab Tech, Med Assistant, Phlebotomy, and Dental Assistant are offered onsite. Minnesota West also has liberal arts classes, on-line courses, and customized training. Students can obtain an Associate of Arts (A.A.) Degree in Liberal Arts through the Center. The degree allows students to build toward a Bachelor Degree by transferring to other Minnesota State Colleges and Universities. Campuses in the surrounding area are located in Canby, Granite Falls, Jackson, Pipestone, Marshall, and Worthington.



To check out the courses or to register, go to www.mnwest.edu. For more information about the Luverne campus, contact Jill Arp at (507) 449-2773, or email her at Jill.Arp@mnwest.edu.

TRANSPORTATION

AIRPORT

Luverne's Municipal Airport, Quentin Aanenson Field, is named after a local WWII fighter pilot having a central role in Ken Burn's "The War" (PBS Documentary 2007).

It is a federal aid general aviation airport that has recently undergone a \$3 million expansion to a 4,200-foot (north-south) runway with precision-like GPS instrument approaches. This new runway accommodates single engine to medium sized twin engine piston and jet aircrafts.

An arrival and departure building offers computerized weather flight planning, a meeting room, and a pilot waiting area. The airport has ten regular sized and four larger modern nested T-Hangars with electric bi-fold doors and concrete floors.

The main airport facility houses the planes and all equipment for "Skydive Adventures," which is a private skydiving company offering skydiving training and scheduled skydiving events.

Tailwinds Aircraft Services LLC is the airport manager at Quentin Aanenson Field. The Grand Opening at Quentin Aanenson Field was on September 11 and 12, 2009. The airport just recently received the prestigious FAA Governor's Award by the Federal Aviation Administration and the Minnesota Department of Transportation for successful and innovative project accomplishments. This award is usually given to a larger airport. It awards excellence in planning, development, operation, maintenance, and public relations.

For more information on "Skydive Adventures," go to www.skydiveadventures.net.

South of Interstate 90 off of State Hwy. 75, 941 US Hwy. 75

Airport Phone: (507) 283-5041

Ben Baum, Airport Manager: tailwindsair@gmail.com or (605) 413-5028



BUS SERVICES

Each day, two Jefferson Buses leave from Luverne, one heading south and the other to the north to Minneapolis. The bus depot is located at the Expressway Luverne gas station on South Highway 75. Bussing services also provide transit to Sioux Falls and regions in the Twin Cities Metro area.

For fare and schedule information, call toll free 1-800-231-2222 (Jefferson Bus Lines), (507) 283-3942 (Expressway), or visit www.jeffersonlines.com.

ELLIS & EASTERN RAILWAY

The Ellis & Eastern Railway is the freight-only railroad that runs through Luverne. It connects with the Union Pacific south of Worthington and the Burlington Santa Fe west of Luverne by Manley.

COMMUNITY TRANSIT ROCK COUNTY



The Community Transit of Rock County provides safe and reliable transportation services to all Rock County residents. It provides transportation for people of all ages to and from almost any location in Luverne, Rock County, or out of the county (including Sioux Falls.)

Visit us at <http://unitedcapmn.org/services/community-transit/>



Hours:

Office hours: Monday – Friday 8:00 a.m. – 4:30 p.m.

*Bus Service Route Hours – Monday - Friday
7:30 a.m. - 4:30 p.m., Sunday 8:00 a.m. - 12:00 p.m.*

People can pre-schedule rides for anytime between 6:30 a.m. and 6:00 p.m. Monday through Friday, and 8:00 a.m. and 12:00 p.m. on Sunday.

Shelly Pflaum

*1110 N Blue Mound Ave.
507-537-3861*

[*shelly.pflaum@unitedcapmn.org*](mailto:shelly.pflaum@unitedcapmn.org)

LUVERNE TROLLEY

Luverne's recent addition of the Luverne Trolley provides the community with another means of transportation. The Trolley is intended to be used for special events, such as weddings and birthday parties, as well as local city events. As of 2021, the trolley is currently owned and operated by a Luverne native, Quinn Buss.



Call Quinn at (507)220-3638 to find out more information or to book an event.

CULTURE OF LUVERNE

ROCK COUNTY VETERANS MEMORIAL BUILDING

In July 2009, the old Rock County Jail and Sheriff's Residence officially opened as the Rock County Veterans Memorial Building. Following an extensive \$4 million renovation, the building has become the home to history, art, and community. Housed in the building are two floors featuring the award-winning photographs of National Geographic photographer and Luverne native, Jim Brandenburg. Photos, cards, and other items sold at the Brandenburg Gallery.



Building Hours:

Monday-Friday: 8:00 a.m. to 5:00 p.m.

Saturday: 10:00 a.m. to 5:00 p.m.

Sunday: Closed

The Luverne Area Chamber is located on the main floor. The Herreid Military Museum, located on the third floor, portrays the stories of Rock County veterans and their service in WWI and WWII. Building on the saga woven by Ken Burns in the 2007 PBS special "*THE WAR*," the museum shares stories of ordinary men and women whose military service defined "*the greatest generation*."

On the fourth floor, the Heritage Gallery tells the story of the families who served on the Home Front during WWII. Their stories provide pivotal tales of the sacrifices of men, women, and children who were left home when their sons, fathers, and mothers went off to war. Reception and meeting space are located on the lower level. A beautiful lighted terrace constructed on the north side of the building features railings constructed out of the original jail cells.

Managing and staffing the building is the Luverne Area Chamber. The Chamber provides all service and information for the community.

For additional information, call (507) 283-4061, or (507) 283-1884.

PALACE THEATRE

The Palace Theatre was constructed in 1915 by architect W.E.E. Greene. The Palace, a 550-seat theater first owned by Herman and Maude Jochims, was built primarily for the presentation of stage plays by traveling theater troupes and for the "moving pictures," then an upcoming form of entertainment. Its focal points include the originally painted wall panels, stage curtains, the artistic wall and ceiling décor, and the pipe organ. The Geneva console pipe organ was installed in 1926 to provide accompanying music for the



silent movies. The organ has recently been restored and is in the Palace Theatre today as the oldest working theatre organ of its make and model in the United States. The second story of the building, once used as a ballroom, was later turned into an

104 E Main St.

apartment for the Jochims. It now houses many pictures and pieces of furniture from the original Palace Theatre.

In July 2007, The Legacy Campaign began its project. The Legacy Campaign's goal was to preserve the Palace for generations to come. The \$1 million restoration project included replacing the exterior brick, adding a handicap accessible restroom on the main floor, replacing the seating and carpet on the main floor, providing state-of-the-art theatre rigging and lighting systems, and improving the tenant spaces. Although the building is structurally sound, the interior and exterior restoration aided in preserving its significant historical character. The project was completed in time for the premier of Ken Burns' PBS television series, "The War."

On November 19, 1978, the Palace Theatre was placed on the National Register of Historic sites. The Palace is still open today for movies and live productions. The Theatre shows one movie at a time.

For information on the Palace's show times, movies, and other events, visit www.palacetheatre.us/, go to the Palace Theatre Luverne Facebook page, or call the Palace Box Office at (507) 283-4339.

CARNEGIE / LUVERNE STREET MUSIC

Luverne Street Music is a non-profit music agency that holds private music lessons to students in the historic Carnegie Cultural Center. Located at 205 North Freeman, the beautiful center was originally constructed to house the community library. When the library moved to their new location in 1991, the building became the official home of the arts organizations from all around Rock County. Luverne Street Music later moved into the Carnegie building on March 1st of 2016. The newly renovated space offers lessons in voice, guitar, piano, brass, and woodwind instruments to students of all ages. The studio is managed by a volunteer board of directors and serves over 100 students. Luverne Street Music also provides students with the opportunity to show off their talent by hosting winter and spring recitals each year.



205 N Freeman Ave.

For more information, contact Shawn at (605) 759-0147, email luvernestreetmusic@hotmail.com, or visit www.luvernestreetmusic.com.



VERNE DRIVE-IN THEATER

The Verne Drive-In Theatre was built in the 1950's by Kenneth and Maude Sargent and was sold to the Walt Deutsch family who operated it until 1988. The buildings were originally constructed atop of underground circuits systems with 8,000 feet of wires that were stretched throughout the theater to link autos with sound and picture. The first movies had an admission price of 60 cents with children under age 12 admitted free.

The Verne Drive-In reopened in 2000, which marked the rebirth of the only drive-in facility within 900 miles of the community, until one opened in Mitchell, SD. The drive-in was purchased by the Glenn Burmeister family. They removed the old buildings and replaced them with a new two-story concession stand along



*1/2-mile South on Highway 75
(507) 283-0007*

with a party room available for rental, and a new ticket building as well. The screen was repainted, and trees were planted to surround the theater – which holds 300 to 350 vehicles. The theater broadcasts its sound through regular car radios via an antenna located on the top of the concession stand; therefore, there are no speakers necessary anymore. The drive-in was sold to the Kevin Rozeboom in 2020.

The drive-in is open for business from late April until October (weather permitting), and admission is \$7.00 with children 5 and under admitted free.

Movie listings can be found by calling (507) 283-0007, checking out the sign on the entrance, the Verne Drive In Facebook page, or on vernedriveintheater.com/.

HISTORY CENTER

The Rock County Historical Society is dedicated to the preserving and sharing of the history of Rock County and the people who developed it. They offer education, tours, award-winning programs, exhibits, events, and research materials headquartered in their new History Center located at 312 East Main Street in downtown



Luverne. The History Center houses a permanent nutcracker collection boasting over 4,000 nutcrackers. The Society also manages the Hinkly House, Fitzer Barn, Ordnung Building, Lopau Summer Kitchen, and One-Room School at the Rock County Fairgrounds.



For more information, visit www.rockcountyhistorical.com, or rcmuseum@gmail.com. You can also contact Executive Director, Wendel Buys at 507 283-2122.

Hours:
Tuesday - Saturday: 10:00 a.m. – 4:00 p.m.
Tours and appointments can be arranged at
any time.

HISTORIC PRESERVATION

Preserving the historic, architectural, and aesthetic character and heritage of a community

Historic preservation is the practice of protecting and preserving sites, structures or districts which reflect elements of history. Preservation has many diverse purposes and rewards, including the strengthening of local economies, stabilization of property values, community pride, and the appreciation of local and national history.



To support the vitalization of main street and downtown Luverne, the city has created a program to encourage businesses to make history again. The Historic Façade Improvement Program encourages businesses to restore their buildings to the original appearance - from the 1878-1948 time periods. The city of Luverne offers financial incentives and support to help with the restoration. The preservation also hopes to preserve historic Luverne by avoiding new construction of buildings and trying to repurpose the old ones. The goal in preservation is to make the old buildings last.



Historic preservation can add to a community's understanding of pride in its history and bring economic and other benefits to the community as well. A series of restorations that create a unified image can result in more businesses, more customers, increased activity, higher rent, less vacancy, higher incomes, and more opportunities for owners, shoppers, and residents.

HINKLY HOUSE

In 1892, Mr. R.B. Hinkly, the former Mayor of Luverne, built a beautiful home for himself and his family. The house was constructed of Sioux Quartzite quarried and hauled on horse-drawn boats from the Blue Mound Quarry north of Luverne. In April of 1959, the home was donated to the Rock County Historical Society and opened as a museum in August of the same year. The Hinkly House was placed on the Register of National Historic Sites on June



217 N Freeman Ave.

10, 1975. Within the last ten years, great efforts have been made towards the restoration of the museum. The museum is open with regular hours from June 1st through August 30th, with tours given on Thursdays at 2:00 p.m. thru 4:00 p.m.

For more information or to schedule an appointment, contact Luverne Area Chamber at (507) 283-4061, or visit www.rockcountyhistorical.com/hinkly-house.html.

DOLLARS FOR SCHOLARS

“The most valuable asset the country has is not gold or oil, but the minds of young people.”

-Dr. Irving A. Fradkin

Luverne Dollars of Scholars is a non-profit community-based scholarship program that was initiated on December 6, 1983. The purpose of the program is to raise funds for permanent endowment funds, the income of which is used to provide scholarships to Luverne High School graduates in the form of scholarships. Since 1983, Luverne Dollars for Scholars has been the recipient of 296 perpetual scholarships with a total endowment of over \$9.4 million. Since its establishment, Luverne Dollars for Scholars has awarded over \$6.5 million to over 2,144 graduates. In 2023, Luverne Dollars for Scholars awarded a total of \$523,750 in scholarships to qualifying LHS graduates.



Each year, students in the senior class fill out an application in February. Scholarship awards are determined and certificates are presented to students at LHS Awards Night.

Go to www.luverne.dollarsforscholars.org, call Johnna Ahrendt at (507) 227-4030, or email luvernedfs@gmail.com for more information on this great opportunity or to learn how to establish your own scholarship.

LUVERNE AREA COMMUNITY FOUNDATION

The mission statement of the Luverne Area Community Foundation is to develop and allocate financial resources to support community needs. Individuals can donate funds to the foundation and 100 percent of them will be used to support organizations, such as Generations, Backpack Program, Big Buddies of Rock County, Blue Mound Area Theater, Child Guide, Luv1LuvAll, Rock County Food Shelf, Sanford Health Luverne, Rock County Historical Society, Sanford Hospice, Hinkly House, and the Luverne Area Community Foundation General Fund. The General Fund disperses money to the places where it is most needed.

Gifts to the Foundation can be restricted or unrestricted; restricted gifts go to where the donor designates, and unrestricted gifts can be combined with other gifts to go where they are needed most. All gifts to the Foundation are tax-deductible to the extent allowed by law. The Luverne Area Community Foundation is a charity as defined by section 501c(3) of the Internal Revenue Service code.

More information can be found at www.luvacf.org, the Luverne Area Community Foundation Facebook page, 102 E Main St., or through Emily Crabtree at (507) 220-2424, or emily@luvacf.org.

ROCK COUNTY COMMUNITY LIBRARY

The Rock County Community Library is filled with excellent materials, and it has been serving all residents of Luverne and Rock County since 1993. The library is a member of the Plum Creek Library System, which allows them access to collections all over the state of Minnesota and beyond. The library is a great place for anyone to go work on a project or relax and read a book. It offers a large selection of books, magazines, records, references, videos, and internet access. The library also offers a child's reading program in the summer from early June until the middle of July. To obtain your own library card, stop in and fill out an application form.

The library also hosts a number of fun activities for all ages, such as crafts, trivia, bad art contest, swing dancing, teen book club, book sales, and much more. Some events hosted by the library take place in other spots in Luverne. All information on events can be found on Facebook.



201 W Main St.
(507) 449-5040

rocklibrarystaff@gmail.com

For more information, go to rockcountycommunitylibrary.org/, or the Rock County Community Library Facebook page.

Rock County Community Library Hours:

Monday – Thursday	10:00 a.m. – 8:00 p.m.
Friday	10:00 a.m. – 5:00 p.m.
Saturday	10:00 a.m. – 2:00 p.m.
Sunday	Closed

LEISURE ACTIVITIES

BLUE MOUND ICE ARENA

The Luverne Hockey Club completed an ice arena in the fall of 1991. The \$800,000 project was partially funded by donations and fundraisers sponsored by the Luverne Hockey Club. During the months of October through June, the ice arena is used for Luverne Cardinal Hockey games, Blue Mound Figure Skaters, open skating, ice skating lessons, and other special activities. Ice availability is dependent on weather conditions and ongoing events.

The ice rink received a new addition to the complex in 2013. It includes a new lobby, entryway, office, north locker room, and an area for dry land training on the upper level. The building can also be rented for a variety of activities. It is located at 601 W Hatting St. Luverne.



601 W Hatting St.
(507) 449-9138

For more information, visit luvernehockey.com

LUVERNE COUNTRY CLUB

The Luverne Country Club is a semi-private course that welcomes visitors. This nine-hole course challenges golfers with its watered fairways, abundance of trees, and water hazards all set in a beautiful setting overlooking Luverne. There is also a driving range adjacent to the course and a putting green behind the clubhouse. In addition to the golf course, visitors can relax, visit, and enjoy the bar and grill menu at the clubhouse.

To find out more information and hours, go to the Luverne Country Club Facebook page, or their website: www.luvernecountryclub.com.



1520 111th St.
(507) 283-4383

ROCK COUNTY SPORTSMEN'S CLUB

The Rock County Sportsmen's Club facility provides trap shooting ranges for hunting enthusiasts. Since 2018, the Sportsmen's club has been the home of the Luverne High School Trap Team, coached by Scott Loosbrock. The club also offers several trap leagues for members during the summer and fall. Along with the activities, Rock County Sportsman's Club offers Gun Safety and Marksmanship instruction. Rich DeSchepper is the newest board president for 2021; he can be reached at 507-220-2694.



1477 111th St.
(507) 227-2609

TAKE 16 BREWING COMPANY

Take 16 Brewery offers a variety of events and activities for all ages. In the summer months, visitors can enjoy cold beer, hot food, free yard games, and great live music. There is no cover charge, and all ages are welcome. Take 16 beer and seltzer, wine, soda, and water are available for purchase. There are also year-around events, such as karaoke, trivia night, pub theology, bingo, board game nights, live music, and much more. Take 16 offers indoor and outdoor seating with a great view of all the Main Street activity. The tap room is another wonderful place to gather with family and friends to socialize. Along with events and crafted drinks, the brewing company offers a beautiful event space that can be rented out for any occasion.



509 E Main St.
(866) 663-9986

Hours: Wed. – Thurs.
4:00p.m. - 10:00p.m.

Thurs - Sat 12:00p.m. – 10:00p.m.
Sunday 12:00p.m. – 8:00p.m.

More information can be found on the [Take 16 Brewing Company Facebook Page](#), or their website at www.take16beer.com

CELEBRATIONS & EVENTS

SPRING CITY WIDE RUMMAGE SALES

Over 100 households sign up for this annual event, which is held on the first Friday and Saturday in May. Homeowners can sign up at the Chamber office (213 E. Luverne St.) and receive signs for their location. Maps are printed with the locations, and advertising is provided. Visitors travel from a large area to take in this event of all-out rummaging.

Call the Chamber office at (507) 283-4061 for more information, or look online at www.luvernechamber.com.

BUFFALO DAYS

Buffalo Days is a three-day celebration. The festival begins on Friday evening with a Cruise-In of collector cars. On Saturday, the day begins with a parade in downtown Luverne at 10:00 a.m. Buffalo Days Expo begins at 9:00 a.m. and ends at 4:00 p.m. at the Courthouse Square. Over 100 booths with people from a four-state area offer a variety of crafts. There are many wonderful food booths and a wide variety of entertainment throughout the afternoon, such as a Buffalo Chip Throwing contest, dancing, and Tae Kwon Do. Sunday Features a community worship service, and Tales from the Grave with the Rock County Historical Society.



FARMER'S MARKET

Luverne farmer's market is located at Redbird Field. There is an array of local food and other goods sold from fresh produce, baked goods, jam, honey, soap, meats, and more. Produce changes throughout the summer season by each vendor. For children ages 4-12, there is the Power of Produce club.

June – October, Thursdays 4:00 p.m. – 7:00 p.m.

HOT DOG NITE

Luverne's Hot Dog Nite is a great time for the community to come together. Luverne merchants serve over 15,000 free hot dogs and beverages to those who come out to celebrate as a thank you for their patronage. Entertainment abounds on the streets with Tae-Kwon-Do demonstrations, Spotlight Dance performances, Wiener Dog Races, and a Wiener Dog Beauty Pageant.



ROCK COUNTY FAIR

The Rock County Fair is an opportunity for people in the county to come together and enjoy many events and exhibits. A carnival, livestock shows, rides, food, grand stand events, 4-H, and open class exhibits are only a small part of what you can experience during this special celebration. Other fun events include Enduro Races, Tractor Pull, a free concert, and a pork and beef feed. Ride tickets can be purchased in advance from Sunshine Foods, Luverne Pizza Ranch, Luverne Chamber, and Rauk's Hilltop Stop in Beaver Creek.



For event scheduling and more information, go to www.rockcountyfair.org.

TRI-STATE BAND FESTIVAL

The Tri-State Band Festival is one of the best high school marching band competitions in the state. The festival is held on the last Saturday in September. Bands have the opportunity to participate in the street competition during the parade at 9:30 a.m. in downtown Luverne and / or field competition beginning at 12:30 p.m. at the Cardinal Football Field. Bands from Minnesota, Iowa, and South Dakota come to compete in our Tri-State Band Festival. At the completion of field competition there is a guest band for spectators and band members to enjoy.



For more information, visit www.tri-statebandfestival.com.



WINTERFEST

The holiday season is ushered into Luverne with the annual celebration of Winterfest. Held the first weekend in December, this event features days of great activities for all ages, including live music performances at the Palace Theatre, a huge arts and crafts show, Christmas tree exhibit, photographs with Santa, community dinners, and other events.

Contact the Luverne Area Chamber for additional information at (507) 283-406, or www.luvernechamber.com.



WINTER CARNIVAL

The Winter Carnival is put on by the Luverne High School band and choir students in the month of January or February. It's a fundraiser for both the band and the choir. It includes many booths, such as the cake walk and face painting. The students serve pizza, cotton candy, and root beer floats for the price of a few tickets. There is also an opportunity to win many great prizes by purchasing raffle tickets from one of the music students. This carnival is a great experience for kids and adults alike.

GREEN EARTH PLAYERS (GEP)

The Green Earth Players bring the finest of local main stage theater to Luverne and Rock County twice a year with Reader's Theater and other productions and activities year-round. The GEP also has children's theatre and reader's theatre during the summer. To find out about times and dates, visit the Green Earth Players Facebook page.

<p><i>Green Earth Players Community Theater</i> <i>116 W Main St.</i> <i>PO Box 856</i> <i>Contact: Dianne Ossenfort (507) 283-9050</i></p>
--



**Tickets available at the Palace Box Office (507) 283-4339*

CHURCHES

AMERICAN REFORMED

304 N Fairview Dr.
(507) 283-8600

www.arcluverne.org



BETHANY LUTHERAN (ELS)

720 N Kniss Ave.
(507) 283-4571

www.facebook.com/BethanyLuverne



FIRST BAPTIST

1033 N Jackson St.
(507) 283-4091

www.fbcluverne.org



FIRST PRESBYTERIAN

302 Central Ln.
(507) 283-4787

www.facebook.com/fpcluverne/



GRACE LUTHERAN (ELCA)

500 N Kniss Ave.
(507) 283-4431

www.graceluverne.org



JEHOVAH WITNESS

1503 County Hwy. 4
(507) 283-4569
www.jw.org



LIVING ROCK

500 E Main St.
(507) 449-0057
www.livingrockswmn.org



LUVERNE CHRISTIAN REFORMED

605 N Estey St.
(507) 283-8482
www.luvernecrc.com



NEW LIFE CELEBRATION

211 E Main St.
(507) 449-6522
www.facebook.com/p/New-Life-CelebrationChurch



ROCK RIVER COMMUNITY

1075 110th Ave.
(507) 283-9070
rockrivercommunity.church



ST. CATHERINE'S CATHOLIC

203 E Brown St.
(507) 283-8502
www.stscl.org



ST. JOHN LUTHERAN CHURCH (LCMS)

803 N Cedar St.
(507) 283-2316
www.stjohnlutheranluverne.org



UNITED METHODIST

109 N Freeman Ave.
(507) 283-4529
www.umcluverne.com



CEMETERIES

St. Catherine's Cemetery
North of town on James St.
Luverne, MN 56156

Maplewood Cemetery
West of town at 1042 Warren St.
Luverne, MN 56156

MEDIA

NEWS

The ***Luverne Announcer*** has been Rock County's free circulation publication since 1931. Twelve thousand papers are circulated each Monday to Rock County and surrounding areas in southwestern Minnesota. Our *Luverne Announcer* informs residents of the community updates for the week, sales and specials at Luverne businesses, and the classifieds. The telephone number for the *Announcer* is (507) 283-2333, and they are located at 117 W Main St.

The ***Rock County Star Herald*** is Luverne's weekly legal newspaper. The *Star Herald*, which was established on May 28, 1873, circulates about 3,000 papers every Thursday. The City of Luverne is very proud of the *Star Herald*; it does an excellent job of informing Luverne citizens of current events in the city as well as in the county and state. The *Star Herald* also covers Cardinal Athletics and has many interesting columns from local reporters about pertinent community interests. The *Star Herald's* office is located at 117 W Main St. and can be reached at (507) 283-2333, or check out the *Star Herald* online at www.star-herald.com.

The ***Luverne Outlook*** is a monthly newsletter circulated by the City of Luverne. The *Outlook* contains important dates during the upcoming month, exciting recent news about the city, and some current events. The purpose of the newsletter is to keep citizens of Luverne updated on important information for the month. The *Outlook* is emailed, mailed upon request, or found online at www.cityofluverne.org/outlook.

RADIO

Luverne has two local radio stations. They are KQAD, found at 800 on the AM dial, and KLQL, found at 101.1 on the FM dial. If you need to contact them, call (507) 283-4444. KQAD is proud to sponsor Luverne Athletics.



TV

Cable TV can be ordered from Mediacom or Bluepeak, and five television stations can be tuned into without cable. They include FOX, KELO, KSFY, KDLT, and PAX. KTIK and KCAU from Sioux City, IA can also be possibly tuned into. These local stations cover ABC, NBC, Fox and CBS.

Mediacom and Bluepeak both offer local stations with a community calendar. These stations also show many local church services and Luverne City Council Meetings.

LUVTV

LUVTV is Luverne's local cable access channel broadcasted by the City of Luverne. Currently, it can be viewed on Bluepeak and Mediacom channels 3 and in HD 301, or online at www.cityofluverne.org/luvtv. LUVTV airs local church services, Luverne City Council meetings, Luverne High School sports, other community events, and community calendars/announcements.



<p>Contact Us: LUVTV Coordinator Mandy Van Grootheest City of Luverne 305 E Luverne St., PO Box 659 Email: mvangrootheest@cityofluverne.org Phone: (507) 449-9923</p>
--

LUVERNEEVENTS.COM

Luverne Events is a new community calendar page that has many activities for all ages listed in the calendar. Events can be added to the page through a form on the website. Events include, but are not limited to, the arts, athletics, volunteer opportunities, community events, and much more.

www.luverneevents.com/home

CITY OF LUVERNE MOBILE APP

The City of Luverne recently introduced their mobile application to the Apple App Store and Google Play Store. The app is free to download and it provides valuable information on upcoming events, local news, government officials, utility bill payments, and much more. The app gives helpful information to visitors and current residents alike, and even can send push notifications for important city announcements. It may be found for Android and iOS by searching "*City of Luverne*."

CITY OF LUVERNE INTEREST MAP

LODGING & CAMPING

- A Blue Mounds State Park**
507-283-6050, 1410 161st. St.
- B Cozy Rest Motel**
507-449-4461, 116 S. Kniss Ave.
- C Econolodge**
507-283-7189, 801 S. Kniss Ave.
- D GrandStay Hotel & Suites**
507-449-4949, 908 S Kniss Ave.
- E Hillcrest Motel**
507-283-2363, 210 W. Virginia St.
- F Luverne Campground**
507-920-6998, 800 W. Edgehill Rd.
- G River Road Campground**
507-935-5384, 1405 111th St.
- H Super 8 Motel**
507-283-9541, 1202 1/2 S. Kniss Ave.

PARKS & RECREATION

- A Blue Mounds State Park**
507-283-6050, 1410 161st. St.
- I Cardinal Football Field**
- J Cardinal Tennis Courts**
- K Joe Roberts Field**
- L Luverne City Park**
- M Prairie View Sports Complex**
Baseball, Soccer, Disc Golf
- N Redbird Field**
- O Riverside Park and Field**
- D Roll On Luverne (Borrow-a-Bike)**
908 S. Kniss Ave. (at GrandStay Hotel)
- Q Rotary Park / Dog Park**
- S Schoneman Park**
940 US Highway 75
- T The Lake**
- U Touch the Sky Prairie**
171st St.
- V Child's Remembrance Garden**
- Pocket Parks**

TRAILS

- 3 Luverne Trailhead**
601 E. Main St
- Luverne Loop
- Blue Mounds Trail
- Ashby Trail
- Hwy 75 Bike Lanes

POINTS of INTEREST

- 1 Blue Mound Ice Arena**
507-449-9138, 601 W. Hatting St.
- 2 Blue Mound Liquor**
507-449-5052, 319 W. Main St.
- 3 Luverne Trailhead**
601 E. Main St
- 4 Farmers Market**
209 S. Redbird Rd.
- 5 Good Samaritan Society**
507-283-2375, 110 S. Walnut Ave.
- 6 Hinkly House**
507-283-4061, 217 N. Freeman Ave.
- 7 History Center**
507-283-2122, 312 E. Main St.
- 8 Luverne Aquatics & Fitness**
Indoor pool, Outdoor splash pad, Fitness
507-449-5036, 802 N. Blue Mound Ave.
- 9 Luverne City Hall**
507-449-2388, 305 E. Luverne St.
- 10 Luverne Country Club**
507-283-4383, 1520 111th St.
- 11 Luverne Public Schools**
507-283-4491, 709 N. Kniss Ave.
- 12 Minnesota Veterans Home**
507-283-1100, 1300 N. Kniss Ave.
- 13 Minnesota West**
507-449-2772, 311 N. Spring St.
- 14 Palace Theatre**
507-283-4339, 104 E. Main St.
- 15 Quentin Anenson Field**
Luverne Airport
Skydive Adventures
507-283-5041, 941 US Highway 75
- 16 Rock County Courthouse Square**
507-283-5065, 204 E. Brown St.
- Veterans Memorial Building**
507-283-4061, 213 E. Luverne St.
- Brandenburg Gallery**
- Herred Military Museum**
- Rock County Veterans Memorial**
- 17 Rock County Community Library**
507-449-5040, 201 W. Main St.
- 18 Rock County Fairgrounds**
S. Freeman Ave.
- 19 Rock County Sportsmens Club**
1477 111th St.



VISTOR INFORMATION

- 40 Luverne Area Chamber**
Local Information and Maps
507-283-4061, 213 E. Luverne St.
- 41 Visitor Information Center**
507-283-4027, 924 S. Kniss Ave.
(Located at Those Blasted Things)
- P Parking**
- R Public Restroom**

SERVICES

- 30 Luverne Public Works**
507-449-5043, 202 N. Blue Mound Ave.
- 31 Rock County Law Enforcement Center**
507-283-5000, 1000 N. Blue Mound Ave.
- 32 Rock County Highway Department**
507-283-5013, 1120 N. Blue Mound Ave.
- 33 Sanford Luverne Medical Center**
507-283-2321, 1600 N. Kniss Ave.
- 33 Sanford Luverne Clinic**
507-283-4476, 1601 Sioux Valley Dr.
- Electric Vehicle Charging Stations**
- 3 Level 2 Charging, Luverne Trailhead**
- 34 DC Fast Charging, Papik Motors**

PARKS & TRAILS MAP

TOUCH THE SKY PRAIRIE

See more info on page 20



POINTS of INTEREST

- A Blue Mounds State Park**
- A1 Park Entrance**
507-283-6050, 1410 161st St.
- A2 Camping**
- A3 Eagle Rock Vista**
- A4 Cliffline Area**
- 3 City of Luverne Trailhead**
601 E Main St.
- L Luverne City Park**
700 E Main St.
- 10 Luverne Country Club**
507-283-4383, 1520 111th St.
- 15 Quentin Aanenson Airfield
Luverne Municipal Airport
Skydive Adventures**
941 US Highway 75
- G River Road Campground**
507-935-5384, 1405 111th St.
- O Riverside Park**
- 19 Rock County Sportsmens Club**
1477 111th St.
- 20 Rock River WMA**
- S Schoneman Park**
940 US Highway 75
- U Touch the Sky Prairie**
171st St.
Directions from US 75 & Highway 20: 3 miles W,
1 mile N and 1/4 mile W

TRAILS

- 3 Luverne Trailhead**
601 E Main St.

- Luverne Loop
- Blue Mounds Trail
- Ashby Trail
- Hwy 75 Bike Lanes

- P Parking**



PARK ENTRANCE

BLUE MOUNDS STATE PARK

See more info on page 8

Eagle Rock Vista

Cliffline Area

Blue Mounds Trail
hike • bike • explore

131st St

Luverne Loop
hike • bike • explore

121st St

Kniss Ave / Hwy 75

Blue Mound Ave

Barck St

Dodge St

Luverne St

Main St

Warren St

Edgehill St

Hatting St

Gabrielson Rd

147

4

75

90

9

15

19

20

8

11

161st St

111th St

111th St

2023 / 2024 UPCOMING EVENTS

39th Annual Buffalo Days	Thursday, June 1st - Sunday, June 4th
4th of July at The Lake with Firework Spectacular	Tuesday, July 4th
61st Annual Hot Dog Nite	Thursday, July 13th
Rock County Fair	Wednesday, July 26th - Saturday, July 29th
8th Annual Tractor Ride	Friday, September 1st
72nd Annual Tri-State Band Festival	Saturday, September 30th
Halloween Trunk N' Treat	Tuesday, October 31st
Veteran's Day Program	Friday, November 10th
Santa Train & Light the Night	Sunday, November 26th
Winterfest Celebration	Friday, December 1st – Sunday, December 3rd
Get Hooked Ice Fishing Derby	Saturday, February 17th
St. Patrick's Day Parade	Monday, March 18th
6th Annual Love the Burger Battle	Monday, April 22th – Monday, May 27th
33rd Annual City-Wide Spring Rummage Sales	Wednesday, May 1st – Saturday, May 4th

To find out more information about the city of Luverne, various organizations, upcoming events, and other news, check out the City of Luverne and Luverne Area Chamber websites (www.cityofluverne.org & www.luvernechamber.com), the community events page (www.luverneevents.com) and / or the Luverne Area Chatter Facebook page.

Updated by Ross Bergman
LHS Student Intern
Spring 2023